

Genomic RNA from Human Respiratory Syncytial Virus, B1

Catalog No. NR-48831

Product Description: Genomic RNA was isolated from a preparation of cell lysate and supernatant from Vero cells¹ infected with human respiratory syncytial virus (RSV), B1.

Lot²: 63917388

Manufacturing Date: 07JAN2016

| TEST | SPECIFICATIONS | RESULTS |
|----------------------------------------------------------------------------------------------------------------------------------------------------|-------------------------------------------------------|-----------------------------------------------------------------------------|
| Sequencing of Species-Specific Region (1015 nucleotides) | Consistent with human RSV, B1 Identical to NR-4052 | 99% identity with human RSV, B1 (GenBank: AF013254) Identical to NR-4052 |
| Functional Activity by RT-PCR Amplification³ | ~ 1200 bp amplicon | ~ 1200 bp amplicon (See Figure 1) |
| Total RNA Content by RiboGreen[®] Measurement (Viral, Cellular and Carrier) | Report results | 13.6 ng per 100 µL |
| Virus Inactivation 10% of total yield inoculated on Vero cells ¹ and evaluated by immunofluorescence assay (IFA) ⁴ | No virus detected | No virus detected |

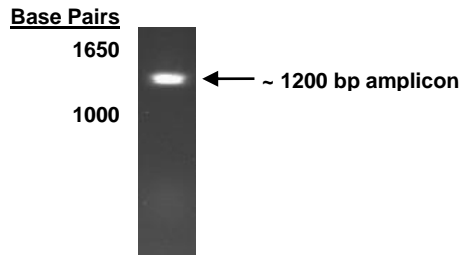
¹Vero cells: ATCC[®] CCL-81™

²Nucleic acid was extracted from a preparation of Human Respiratory Syncytial Virus, B1 (BEI Resources NR-4052, Lot 60109225), using a QIAamp[®] Viral RNA Mini Kit (Qiagen 52906).

³Amplified using iTaq[™] Universal SYBR[®] Green One-Step Kit (Bio-Rad 172-5151) with 5 µL of NR-48831 in a 50 µL reaction

⁴Using LIGHT DIAGNOSTICS[™] Respiratory Syncytial Virus FITC Reagent (Millipore 5022)

Figure 1



Date: 28 JUL 2016

Signature: *Michael R. Gynther*

BEI Resources Authentication

ATCC[®], on behalf of BEI Resources, hereby represents and warrants that the material provided under this certificate has been subjected to the tests and procedures specified and that the results described, along with any other data provided in this certificate, are true and accurate to the best of ATCC[®]'s knowledge.

ATCC[®] is a trademark of the American Type Culture Collection.

You are authorized to use this product for research use only. It is not intended for human use.

