

***Trypanosoma brucei* subsp. *rhodesiense*, Strain KETRI 2772**

Catalog No. NR-46438

Product Description: *Trypanosoma brucei* (*T. brucei*) subsp. *rhodesiense*, strain KETRI 2772 was isolated in 1985 from the blood of a patient in Alupe, Kenya. *T. brucei* subsp. *rhodesiense*, strain KETRI 2772 was obtained by Professor C. J. Bacchi from the Kenya Trypanosomiasis Research Institute (KETRI) strain bank at Mugaga, Kenya.

Lot^{1,2}: 64057430

Manufacturing Date: 17MAR2016

TEST	SPECIFICATIONS	RESULTS
Cell Morphology	Report results	Elongated and slender
Genotyping Sequencing of internal transcribed spacer (ITS) 1, 5.8S ribosomal RNA gene, ITS 2 (~ 1300 base pairs)	Consistent with <i>T. brucei</i>	Consistent with <i>T. brucei</i> ³
Functional Activity by PCR Amplification ITS 1, 5.8S ribosomal RNA gene, ITS 2 ⁴	~ 1300 base pair amplicon	~ 1300 base pair amplicon
Level of Parasitemia (pre-freeze)⁵	≥ 1 × 10 ⁶ parasites/mL	2.5 × 10 ⁷ parasites/mL
Viability (post-freeze)⁶	Growth in inoculated mouse	Growth in inoculated mouse (Figure 1)

¹NR-46438 was produced by inoculation of the deposited material into five BALB/c mice. Infection was allowed to progress for 3 days until the first peak of parasitemia was reached and infected blood was collected by orbital bleeding.

²Quality control testing completed on post-freeze material unless specified as pre-freeze.

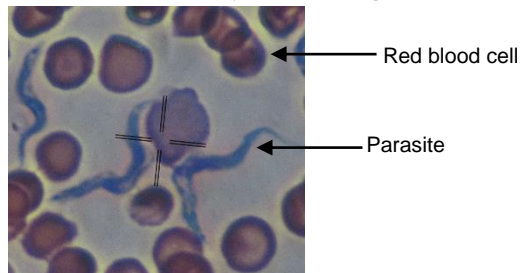
³Also consistent with *T. evansi* and/or *T. equiperdum*, which are putative subspecies of *T. brucei* (Lun, Z.-R., et al. "Trypanosoma brucei: Two Steps to Spread Out from Africa." *Trends Parasitol.* 26 (2010): 424-427. PubMed: 20561822.)

⁴PCR was performed as described in Agbo, E. C., et al. "Measure of Molecular Diversity within the *Trypanosoma brucei* Subspecies *Trypanosoma brucei brucei* and *Trypanosoma brucei gambiense* as Revealed by Genotypic Characterization." *Exp. Parasitol.* 99 (2001): 123-131. PubMed: 11846522.

⁵Parasitemia was determined after 2 days of infection by microscopic counts using a haemocytometer and 0.85% ammonium chloride as diluent.

⁶Viability of trypanosomes was confirmed by examination of a BALB/c mouse for parasitemia for 2 days.

Figure 1: Viable Parasites after 2 Days (100X Magnification)



Date: 04 AUG 2016

Signature:

BEI Resources Authentication

ATCC®, on behalf of BEI Resources, hereby represents and warrants that the material provided under this certificate has been subjected to the tests and procedures specified and that the results described, along with any other data provided in this certificate, are true and accurate to the best of ATCC®'s knowledge.

ATCC® is a trademark of the American Type Culture Collection.

You are authorized to use this product for research use only. It is not intended for human use.

