

Dermabacter sp., Strain HFH0086

Catalog No. HM-857

Product Description: *Dermabacter* sp., Strain HFH0086 was isolated from human feces.

Lot^{1,2}: 64447414

Manufacturing Date: 12AUG2016

TEST	SPECIFICATIONS	RESULTS
Phenotypic Analysis Cellular morphology Colony morphology ³ Motility (wet-mount)	Report results Report results Report results	Gram-positive rods Circular, convex, entire, smooth and cream (Figure 1) Non-motile
Genotypic Analysis Sequencing of 16S ribosomal RNA gene (~ 790 base pairs)	≥ 99% sequence identity to <i>Dermabacter</i> sp., strain HFH0086 (GenBank: ATFO01000007.1)	≥ 99% sequence identity to <i>Dermabacter</i> sp., strain HFH0086 (GenBank: ATFO01000007.1)
Purity (post-freeze)⁴	Consistent with expected colony morphology	Consistent with expected colony morphology
Viability (post-freeze)³	Growth	Growth

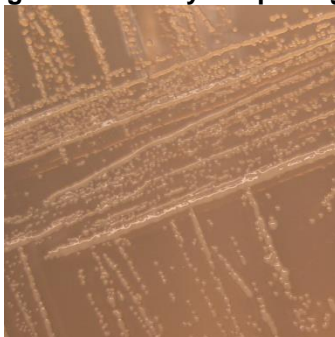
¹Quality control of HMP material is only performed to demonstrate that the material distributed by BEI Resources is identical to the deposited material. It should not be considered a complete characterization of the deposited organism.

²*Dermabacter* sp., strain HFH0086 was deposited by Thomas M. Schmidt, Professor, Department of Microbiology and Molecular Genetics, Michigan State University, East Lansing, Michigan, USA. HM-857 was produced by inoculation of the deposited material into *Dermabacter* broth and incubated for 2 days at 30°C in an aerobic atmosphere. Broth inoculum was added to *Dermabacter* agar kolles for 2 days at 30°C in an aerobic atmosphere to produce this lot.

³2 days at 30°C in an aerobic atmosphere on *Dermabacter* agar

⁴Purity of this lot was assessed for 7 days at 30°C in an aerobic atmosphere on Tryptic Soy agar with 5% defibrinated sheep blood.

Figure 1: Colony Morphology



Date: 03 OCT 2016

Signature: 

BEI Resources Authentication

ATCC®, on behalf of BEI Resources, hereby represents and warrants that the material provided under this certificate has been subjected to the tests and procedures specified and that the results described, along with any other data provided in this certificate, are true and accurate to the best of ATCC®'s knowledge.

ATCC® is a trademark of the American Type Culture Collection.

You are authorized to use this product for research use only. It is not intended for human use.

