

**Cryptococcus gattii, Strain NIH444**

**Catalog No. NR-49162**

**Product Description:** *Cryptococcus gattii* (*C. gattii*), strain NIH444 was isolated from human cerebrospinal fluid in California, USA. Strain NIH444 was deposited as lineage VGIIa, serotype B and mating type (MAT) α.

**Lot<sup>1</sup>: 63214405**

**Manufacturing Date: 23SEP2015**

TEST	SPECIFICATIONS	RESULTS
<b>Phenotypic Analysis</b> Cellular morphology <sup>2</sup>  Colony morphology <sup>3</sup> Canavanine-glycine-bromthymol blue (CGB) differential medium <sup>4</sup>	Report results  Report results Report results	Globose, single or budding, no pseudohyphae (Figure 1) Smooth, glistening and white to cream Blue
<b>Genotypic Analysis</b> Sequencing of partial 18S rRNA gene, internal transcribed spacer (ITS) 1, 5.8S rRNA gene, ITS 2, partial 28S rRNA (~ 530 base pairs) Sequencing of 26S rRNA gene (~ 550 base pairs)	≥ 99% sequence identity to <i>C. gattii</i> (GenBank: FJ914888.1)  ≥ 99% sequence identity to <i>C. gattii</i> (GenBank: KC171326.1)	99.6% sequence identity to <i>C. gattii</i> (GenBank: FJ914888.1)  99.5% sequence identity to <i>C. gattii</i> (GenBank: KC171326.1)
<b>Purity<sup>5</sup></b> Nutrient broth with 0.1% Yeast Extract at 25°C Nutrient broth with 0.1% Yeast Extract at 37°C	No bacterial growth No bacterial growth	No bacterial growth No bacterial growth
<b>Viability (post-freeze)<sup>2</sup></b>	Growth	Growth

<sup>1</sup>NR-49162 was produced by inoculation of seed material onto modified Sabouraud Dextrose agar and incubated for 3 days at 25°C in an aerobic atmosphere. Yeast were harvested from agar plates with 20% glycerol.

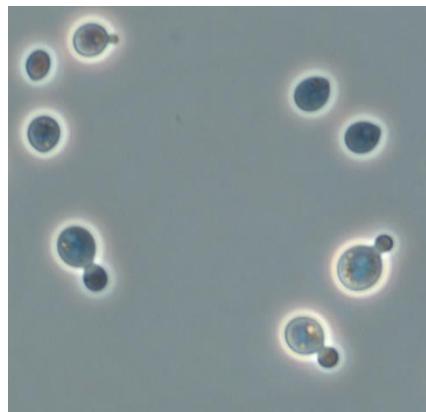
<sup>2</sup>3 days at 25°C in an aerobic atmosphere on modified Sabouraud Dextrose agar

<sup>3</sup>3 days at 25°C in an aerobic atmosphere on modified Sabouraud d Dextrose agar

<sup>4</sup>3 days at 26°C in an aerobic atmosphere. CGB medium differentiates *C. gattii* from *C. neoformans* based on the ability of *C. gattii* isolates to grow in the presence of L-canavanine and to assimilate glycine as a sole carbon source, resulting in a blue color. *C. neoformans* isolates will show yellow to light-green on CGB medium. [McTaggart, L., et al. "Rapid Identification of *Cryptococcus neoformans* var. *grubii*, *C. neoformans* var. *neoformans*, and *C. gattii* by Use of Rapid Biochemical Tests, Differential Media, and DNA Sequencing." *J. Clin. Microbiol.* 2011 (49): 2522-2527. PubMed: 21593254.]

<sup>5</sup>Clarity of broth was determined by visual inspection after 3 days in an aerobic atmosphere.

**Figure 1: Cellular Morphology**



## Certificate of Analysis for NR-49162

**Date:** 07 DEC 2016

**Signature:**



BEI Resources Authentication

ATCC<sup>®</sup>, on behalf of BEI Resources, hereby represents and warrants that the material provided under this certificate has been subjected to the tests and procedures specified and that the results described, along with any other data provided in this certificate, are true and accurate to the best of ATCC<sup>®</sup>'s knowledge.

ATCC<sup>®</sup> is a trademark of the American Type Culture Collection.

You are authorized to use this product for research use only. It is not intended for human use.

