

Sua E1, *Anopheles gambiae* Cell Line

Catalog No. MRA-924

Product Description: The *Anopheles gambiae* cell line Sua E1 was established from neonate larvae of the Suakoko 2La strain.

Lot¹: 63711088

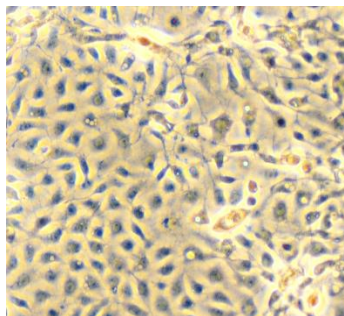
Manufacturing Date: 19AUG2016

TEST	SPECIFICATIONS	RESULTS
Growth Properties	Adherent monolayer	Adherent monolayer
Cellular Morphology	Adherent monolayer	Adherent monolayer (Figure 1)
Cell Count	≥ 1.0 × 10 ⁶ cells per vial	5 × 10 ⁶ cells per vial
Post-Freeze Viability	≥ 75%	77%
Sterility (21-day incubation) Harpo's HTYE broth ² , 37°C and 26°C, aerobic Tryptic Soy broth, 37°C and 26°C, aerobic Sabouraud Dextrose broth, 37°C and 26°C, aerobic DMEM with 10% FBS, 37°C, aerobic Sheep blood agar, 37°C, aerobic Sheep blood agar, 37°C, anaerobic Thioglycollate broth, 37°C, anaerobic	No growth No growth No growth No growth No growth No growth No growth	No growth No growth No growth No growth No growth No growth No growth
Mycoplasma Contamination DNA Detection by PCR	None detected	None detected

¹MRA-924 was produced by cultivation of MR-MRA-924 lot 58422568 in Schneider's *Drosophila* medium supplemented with 10% fetal bovine serum (Gemini Bio-Products 100-135; insect cell qualified), penicillin (100 U/mL) and streptomycin (100 U/mL) at 25°C in sealed flasks for 34 days, after which the cells reached 80%-90% confluency and were harvested. Every 1 to 4 days, media was replaced with fresh culture medium. Cells were reseeded on day 4 (1:2 split), day 9 (1:3 split), day 20 (1:2 split) and day 29 (1:1.5 split).

²Atlas, Ronald M. *Handbook of Microbiological Media*. 3rd ed. Ed. Lawrence C. Parks. Boca Raton: CRC Press, 2004, p. 798.

Figure 1: Cellular Morphology



Date: 09 JAN 2017

Signature:

BEI Resources Authentication

ATCC®, on behalf of BEI Resources, hereby represents and warrants that the material provided under this certificate has been subjected to the tests and procedures specified and that the results described, along with any other data provided in this certificate, are true and accurate to the best of ATCC®'s knowledge.

ATCC® is a trademark of the American Type Culture Collection.

You are authorized to use this product for research use only. It is not intended for human use.



BEI Resources

www.beiresources.org

E-mail: contact@beiresources.org

Tel: 800-359-7370

Fax: 703-365-2898