

4a-3B, *Anopheles gambiae* Cell Line

Catalog No. MRA-919

Product Description: The *Anopheles gambiae* cell line 4a-3B was established from neonate larvae of the 4a r/r strain.

Lot¹: 70000595

Manufacturing Date: 09DEC2016

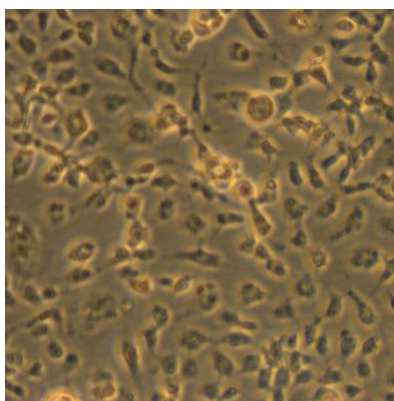
TEST	SPECIFICATIONS	RESULTS
Growth Properties	Adherent monolayer	Adherent monolayer
Cellular Morphology²	Adherent monolayer	Adherent monolayer (Figure 1)
Cell Count (pre-freeze)	≥ 1.0 × 10 ⁶ cells per vial	1.7 × 10 ⁷ cells per vial
Post-Freeze Viability	≥ 75% viable cells	78.9% viable cells
Sterility (21-day incubation) Harpo's HTYE broth ³ , 37°C and 26°C, aerobic Tryptic Soy broth, 37°C and 26°C, aerobic Sabouraud Dextrose broth, 37°C and 26°C, aerobic DMEM with 10% FBS, 37°C, aerobic Sheep blood agar, 37°C, aerobic Sheep blood agar, 37°C, anaerobic Thioglycollate broth, 37°C, anaerobic	No growth No growth No growth No growth No growth No growth No growth	No growth No growth No growth No growth No growth No growth No growth
Mycoplasma Contamination DNA Detection by PCR	None detected	None detected

¹MRA-919 was produced by cultivation of MR-MRA-919 lot 58422736 in Schneider's *Drosophila* medium supplemented with 10% fetal bovine serum (Gemini Bio-Products 100-135; insect cell qualified), penicillin (100 U/mL) and streptomycin (100 U/mL) at 25°C in sealed flasks for 9 days, after which the cells reached 80%-90% confluency and were harvested. Every 1 to 4 days, media was replaced with fresh culture medium. Cells were reseeded on day 1 (1:6 split), day 5 (1:3 split) and day 7 (1:2 split).

²12 days at 25°C in Schneider's *Drosophila* medium supplemented with 10% fetal bovine serum, penicillin (100 U/mL) and streptomycin (100 U/mL)

³Atlas, Ronald M. *Handbook of Microbiological Media*. 3rd ed. Ed. Lawrence C. Parks. Boca Raton: CRC Press, 2004, p. 798.

Figure 1: Cellular Morphology



Date: 31 JAN 2017

Signature:



BEI Resources Authentication

ATCC®, on behalf of BEI Resources, hereby represents and warrants that the material provided under this certificate has been subjected to the tests and procedures specified and that the results described, along with any other data provided in this certificate, are true and accurate to the best of ATCC®'s knowledge.

ATCC® is a trademark of the American Type Culture Collection.

You are authorized to use this product for research use only. It is not intended for human use.

