

Staphylococcus epidermidis, Strain VCU013

Catalog No. NR-46376

Product Description: *Staphylococcus epidermidis* (*S. epidermidis*), strain VCU013 is of unknown origin.

Lot¹: 63822408

Manufacturing Date: 22OCT2015

TEST	SPECIFICATIONS	RESULTS
Phenotypic Analysis Cellular morphology Colony morphology ² Motility (wet mount) Hemolysis ² Biochemical characterization Catalase Coagulase ³ VITEK [®] MS (MALDI-TOF)	Gram-positive cocci Report results Report results Report results Positive Report results <i>S. epidermidis</i>	Gram-positive cocci Circular, low convex, entire, smooth and white (Figure 1) Non-motile Non-hemolytic Positive Negative <i>S. epidermidis</i> (99.9%)
Genotypic Analysis Sequencing of 16S ribosomal RNA gene (~ 1400 base pairs)	≥ 99% sequence identity to <i>S. epidermidis</i> , strain VCU013 (GenBank: JHTZ01000030.1)	99.8% sequence identity to <i>S. epidermidis</i> , strain VCU013 (GenBank: JHTZ01000030.1)
Purity (post-freeze)⁴	Consistent with expected colony morphology	Consistent with expected colony morphology
Viability (post-freeze)²	Growth	Growth

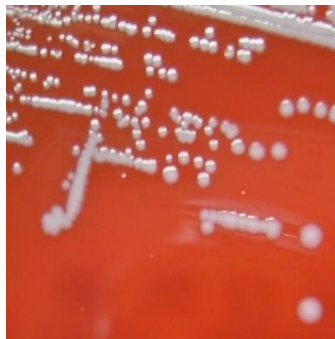
¹*S. epidermidis*, strain VCU013 was deposited to BEI Resources as part of the NARSA collection. NR-46376 was produced by inoculation of the deposited material into Tryptic Soy broth and grown 1 day at 37°C in an aerobic atmosphere. Broth inoculum was added to Tryptic Soy agar with 5% defibrinated sheep blood kolles which were grown 1 day at 37°C in an aerobic atmosphere to produce this lot.

²1 day at 37°C in an aerobic atmosphere on Tryptic Soy agar with 5% defibrinated sheep blood

³1 day at 37°C in rabbit serum with 0.15% EDTA (Coagulase Plasma BBL™ 240827)

⁴Purity of this lot was assessed for 7 days at 37°C in an aerobic atmosphere on Tryptic Soy agar with 5% defibrinated sheep blood.

Figure 1: Colony Morphology



Date: 23 FEB 2017

Signature: 
BEI Resources Authentication

ATCC®, on behalf of BEI Resources, hereby represents and warrants that the material provided under this certificate has been subjected to the tests and procedures specified and that the results described, along with any other data provided in this certificate, are true and accurate to the best of ATCC®'s knowledge.

ATCC® is a trademark of the American Type Culture Collection.

You are authorized to use this product for research use only. It is not intended for human use.

