

Genomic DNA from *Leishmania tropica*, Strain NIH RUP (MHOM/AF/87/RUP)

Catalog No. NR-50127

Product Description: Genomic DNA was extracted from *Leishmania tropica* (*L. tropica*), strain NIH RUP (MHOM/AF/87/RUP) (also referred to as MHOM/AF/87/RP), which was isolated in 1997 from the reactive lesion of a patient with cutaneous leishmaniasis in Afghanistan.

Lot¹: 63902586

Manufacturing Date: 22OCT2015

TEST	SPECIFICATIONS	RESULTS
Agarose Gel Electrophoresis	High molecular weight chromosomal DNA	High molecular weight chromosomal DNA (Figure 1)
Content by PicoGreen[®] Measurement	1 µg to 3 µg per vial	3.7 µg in 176 µL per vial (21 µg/mL) ²
Genotypic Analysis Sequencing of Internal transcribed spacer (ITS) 1, 5.8S ribosomal RNA gene (rRNA), ITS 2 (~ 940 base pairs)	Consistent with <i>L. tropica</i>	Consistent with <i>L. tropica</i>
Functional Activity by PCR Amplification³ ITS 1, 5.8S rRNA gene, ITS 2	~ 1200 base pair amplicon	~ 1200 base pair amplicon
OD₂₆₀/OD₂₈₀ Ratio	1.7 to 2.1	2.0
Protozoan Inactivation 10% of total yield plated on Modified M199 medium ⁴	No viable organisms detected	No viable organisms detected

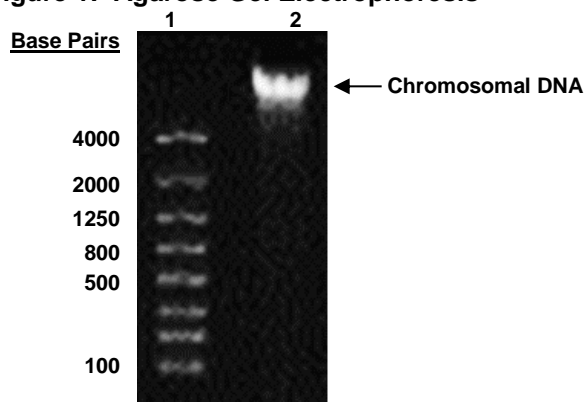
¹NR-50127 was extracted from a culture of BEI Resources NR-48820 lot 63009505 using proprietary technology.

²The amount of genomic DNA in the vial exceeds the current specifications, but does not negatively impact the final product.

³Primer sequences and conditions for PCR are available upon request.

⁴Incubated in Modified M199 medium (Lonza 12-109F) supplemented with 10% heat-inactivated fetal bovine serum and 10 µg/mL hemin supplemented with 10% heat-inactivated fetal bovine serum and 10 µg/mL hemin for 14 days at 25°C in an aerobic atmosphere.

Figure 1: Agarose Gel Electrophoresis



Lane 1: Lonza FlashGel™ 4 kb DNA Marker

Lane 2: 105 ng of NR-50127

Date: 07 MAR 2017

Signature:



BEI Resources Authentication

ATCC®, on behalf of BEI Resources, hereby represents and warrants that the material provided under this certificate has been subjected to the tests and procedures specified and that the results described, along with any other data provided in this certificate, are true and accurate to the best of ATCC®'s knowledge.

ATCC® is a trademark of the American Type Culture Collection.

You are authorized to use this product for research use only. It is not intended for human use.

