

**Escherichia coli, Strain A9619-c2**

**Catalog No. NR-17655**

**Product Description:** *Escherichia coli* (*E. coli*), strain A9619-c2 was isolated in 1983 from a human in the USA; it has been typed as an enteropathogenic *E. coli* (EPEC) strain. **Note: The label refers to this item as strain A9619-c2 (11c). The (11c) is a lab designation that was used for tracking and is not part of the strain name.**

**Lot<sup>1</sup>: 61192065**

**Manufacturing Date: 23AUG2012**

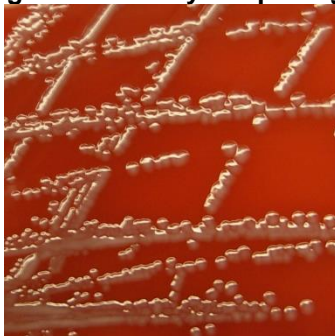
TEST	SPECIFICATIONS	RESULTS
<b>Phenotypic Analysis</b> Cellular morphology Colony morphology <sup>2</sup>  Analytical profile index (API <sup>®</sup> 20 E)	Gram-negative rod Report results  Consistent with <i>E. coli</i>	Gram-negative rod Circular, convex, entire, smooth and cream (Figure 1) Consistent with <i>E. coli</i>
<b>Genotypic Analysis</b> Sequencing of 16S ribosomal RNA gene (~ 740 base pairs)  Riboprinter <sup>®</sup> Microbial Characterization System	≥ 99% sequence identity to <i>E. coli</i> type strain (GenBank: X80725) ≥ 85% <i>E. coli</i>	99.6% sequence identity to <i>E. coli</i> type strain (GenBank: X80725) <sup>3</sup> <i>E. coli</i> (98%)
<b>PCR Assay of Extracted DNA</b> 16S ribosomal RNA gene PCR amplification of chromosomal borne virulence markers <i>stx1</i> <i>stx2</i>	~ 1500 base pair amplicon  Report results Report results	~ 1500 base pair amplicon  Positive Negative
<b>Viability (post-freeze)<sup>2</sup></b>	Growth	Growth

<sup>1</sup>*E. coli*, strain A9619-c2 was deposited by C. DebRoy, Director, *E. coli* Reference Center, Department of Veterinary and Biomedical Sciences, College of Agricultural Sciences, The Pennsylvania State University, University Park, Pennsylvania. NR-17655 was produced by inoculation of the deposited material into Tryptic Soy broth and grown 1 day at 37°C in an aerobic atmosphere. Broth inoculum was added to Tryptic Soy agar kolles which were grown 1 day at 37°C in an aerobic atmosphere to produce this lot.

<sup>2</sup>1 day at 37°C in an aerobic atmosphere on Tryptic Soy agar with 5% defibrinated sheep blood

<sup>3</sup>Also consistent with *Shigella* species

**Figure 1: Colony Morphology**



## Certificate of Analysis for NR-17655

**Date:** 21 APR 2017

**Signature:**



BEI Resources Authentication

ATCC<sup>®</sup>, on behalf of BEI Resources, hereby represents and warrants that the material provided under this certificate has been subjected to the tests and procedures specified and that the results described, along with any other data provided in this certificate, are true and accurate to the best of ATCC<sup>®</sup>'s knowledge.

ATCC<sup>®</sup> is a trademark of the American Type Culture Collection.

You are authorized to use this product for research use only. It is not intended for human use.

