

Monoclonal Anti-*Toxoplasma gondii* Rhopty Neck Protein RON9, Clone T5 2A7 (produced *in vitro*)

Catalog No. NR-50263

Product Description: Antibody Class: IgG1 and IgG3k

Mouse monoclonal antibody prepared against the rhopty neck (RON) protein RON9 of *Toxoplasma gondii* (*T. gondii*) clone T5 2A7 was purified from hybridoma supernatant by protein G affinity chromatography.

Lot¹: 64463685

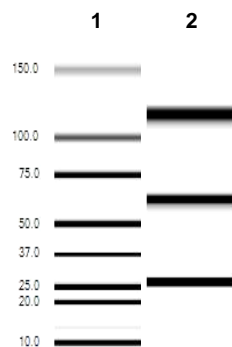
Manufacturing Date: 24AUG2016

TEST	SPECIFICATIONS	RESULTS
Antibody Class Determination	Report results	IgG1 and IgG3k
Experion Pro260 Analysis Average Purity	Correct molecular weight (MW) for heavy and light chains Report results	Correct molecular weight (MW) for heavy and light chains (Figure 1) 94.3% pure
Concentration by Spectrophotometer at OD₂₈₀	≥ 1.0 mg/mL	1.2 mg per mL
Functional Activity by Immunofluorescence Assay² <i>T. gondii</i> infected human skin fibroblast cells with NR-50263 <i>T. gondii</i> infected human skin fibroblast cells with FITC-conjugated goat anti-mouse IgG	Reactive Nonreactive	Reactive; surface and cell membrane specific staining (Figure 2) Nonreactive; no specific staining of parasites, only background fluorescence observed
Sterility	0.22 µm filter-sterilized	0.22 µm filter-sterilized

¹Mouse monoclonal antibody was purified using protein G affinity chromatography from supernatants obtained from mouse hybridoma clone T5 2A7 adapted to serum-free media.

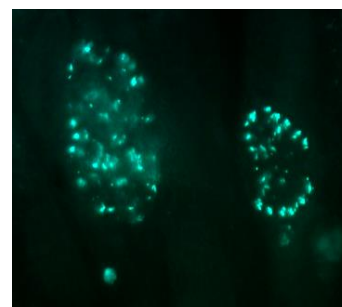
²Specific labeling of *T. gondii* cells with NR-50263 and FITC was observed after infection of human skin fibroblast cells (ATCC® CRL-1634™) with *T. gondii* (ATCC® PRA-310™). NR-50263 was used at a dilution of 1:500, followed by FITC-conjugated goat anti-mouse IgG (Invitrogen® A16073) as secondary antibody (1:2000).

Figure 1: Experion Pro260 Analysis



Lane 1: Pro260 Ladder
Lane 2: NR-50263

Figure 2: Immunofluorescence Assay of *T. gondii* Infected Fibroblast Cells



Date: 10 APR 2017

Signature: 

BEI Resources Authentication

ATCC®, on behalf of BEI Resources, hereby represents and warrants that the material provided under this certificate has been subjected to the tests and procedures specified and that the results described, along with any other data provided in this certificate, are true and accurate to the best of ATCC®'s knowledge.

ATCC® is a trademark of the American Type Culture Collection.
You are authorized to use this product for research use only. It is not intended for human use.

