

Genomic RNA from Chikungunya Virus, 181/25

Catalog No. NR-50345

Product Description: Genomic RNA was isolated from a preparation of clarified supernatant from *Cercopithecus aethiops* kidney epithelial cells (Vero E6) infected with chikungunya virus (CHIKV), 181/25.

Lot¹: 64240316

Manufacturing Date: 29NOV2016

TEST	SPECIFICATIONS	RESULTS
Sequencing of Species-Specific Region (957 nucleotides)	Consistent with CHIKV	Consistent with CHIKV ²
	Consistent with NR-13222	Consistent with NR-13222
Functional Activity by RT-PCR Amplification³	~ 1180 bp amplicon	~ 1180 bp amplicon (Figure 1)
Total RNA Content by RiboGreen[®] Measurement (Viral, Cellular, and Carrier)	Report results	1.7 ng per 100 µL
Viral RNA Content by Droplet Digital RT-PCR	Report results	7.3 x 10 ³ copies per µL
Virus Inactivation 10% of total yield inoculated on Vero cells ⁴ and evaluated for cytopathic effect ⁵	No viable virus detected	No viable virus detected

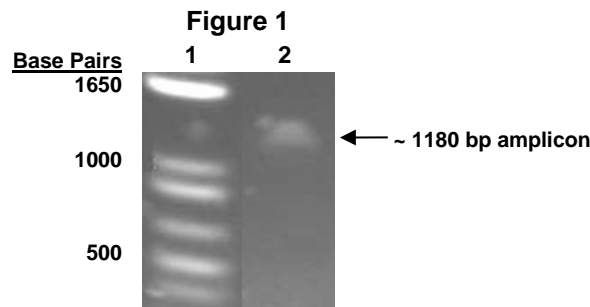
¹Nucleic acid was extracted from a preparation of CHIKV, 181/25 (BEI Resources NR-13222, Lot 58507550) using a QIAamp[®] Viral RNA Mini Kit (Qiagen 52906).

²Sequence information for CHIKV, 181/25 is not available in the NCBI database; nucleotide sequence obtained for NR-50345, Lot No. 64240316 is ~ 99% identical to CHIKV strain AF15561 (GenBank: EF452493) from which CHIKV, 181/25 was derived.

³Amplified using iTaq[™] Universal SYBR[®] Green One-Step Kit (Bio-Rad 172-5151) with 5 µL of NR-50345 in a 50 µL reaction.

⁴Vero E6 cells: ATCC[®] CRL-1586[™]

⁵Use of the QIAamp[®] Viral RNA Mini Kit has been demonstrated to consistently inactivate CHIK viruses as shown by the absence of cytopathic effect after plating the entire extract on virus-susceptible cells.



Lane 1: Invitrogen[™] TrackIt[™] 1 Kb Plus DNA Ladder
Lane 2: NR-50345

Date: 13 APR 2017

Signature: *Michael R. Gynther*

BEI Resources Authentication

ATCC[®], on behalf of BEI Resources, hereby represents and warrants that the material provided under this certificate has been subjected to the tests and procedures specified and that the results described, along with any other data provided in this certificate, are true and accurate to the best of ATCC[®]'s knowledge.

ATCC[®] is a trademark of the American Type Culture Collection.

You are authorized to use this product for research use only. It is not intended for human use.

