

Aspergillus fumigatus, Strain ASFU-2263

Catalog No. NR-45108

Product Description: *Aspergillus fumigatus* (*A. fumigatus*), strain ASFU-2263 was isolated in July 2012 from sputum obtained from a fatal case of invasive aspergillosis in Belgium. *A. fumigatus*, strain ASFU-2263 was deposited as an azole resistant strain due to a mutation in the *cyp51A* gene (TR46/Y121F/T289A).

Lot¹: 64378991

Manufacturing Date: 28SEP2016

| TEST | SPECIFICATIONS | RESULTS |
|--|---|---|
| Phenotypic Analysis Cellular morphology ² Surface, reverse Conidial morphology ² Conidia, stipes | Report results Report results | Dark grey-green, velutinous, powdery; tan (Figure 1A) Globose, ellipsoid and smooth; stipes uncolored and smooth-walled (Figure 1B) |
| Genotypic Analysis Sequencing of internal transcribed spacer (ITS) 1, 5.8S ribosomal RNA (rRNA) gene, and ITS 2 (~ 550 base pairs) Sequencing of 28S rRNA gene (partial) (~ 540 base pairs) | >99% sequence identity to <i>A. fumigatus</i> , type strain (GenBank: NR_121481) >99% sequence identity to <i>A. fumigatus</i> , type strain (GenBank: AY660917.1) | 100% sequence identity to <i>A. fumigatus</i> , type strain (GenBank: NR_121481) 100% sequence identity to <i>A. fumigatus</i> , type strain (GenBank: AY660917.1) |
| Purity³ Nutrient broth with 0.1% Yeast Extract at 25°C Nutrient broth with 0.1% Yeast Extract at 37°C | No bacterial growth No bacterial growth | No bacterial growth No bacterial growth |
| Viability (post-freeze)⁴ | Growth | Growth |

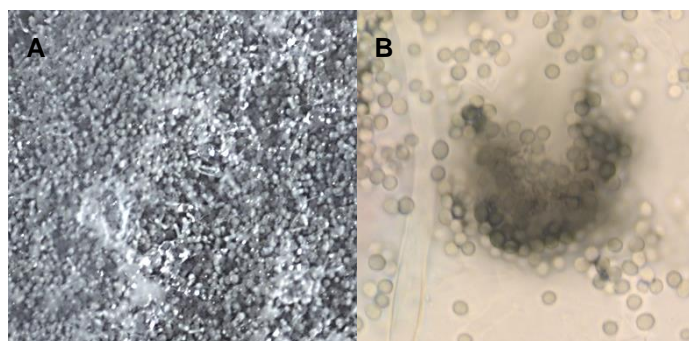
¹NR-45108 was produced by growth of the deposited material on modified Sabouraud Dextrose agar in an aerobic atmosphere at 25°C for 9 days.

²7 days at 25°C in an aerobic atmosphere on modified Sabouraud Dextrose agar

³Clarity of broth was determined by visual inspection after 7 days in an aerobic atmosphere.

⁴2 days at 25°C in an aerobic atmosphere on modified Sabouraud Dextrose agar

Figure 1: Morphology



Date: 28 APR 2017

Signature:



BEI Resources Authentication

ATCC®, on behalf of BEI Resources, hereby represents and warrants that the material provided under this certificate has been subjected to the tests and procedures specified and that the results described, along with any other data provided in this certificate, are true and accurate to the best of ATCC®'s knowledge.

ATCC® is a trademark of the American Type Culture Collection.

You are authorized to use this product for research use only. It is not intended for human use.

