

**Genomic RNA from Bourbon Virus, Original**

**Catalog No. NR-50146**

This reagent is the property of the U.S. Government.

**Product Description:** Genomic RNA was isolated from a preparation of cell lysate and supernatant from *Cercopithecus aethiops* kidney epithelial cells<sup>1</sup> infected with Bourbon virus (BRBV), Original.

**Lot<sup>2</sup>: 64242586**

**Manufacturing Date: 02AUG2016**

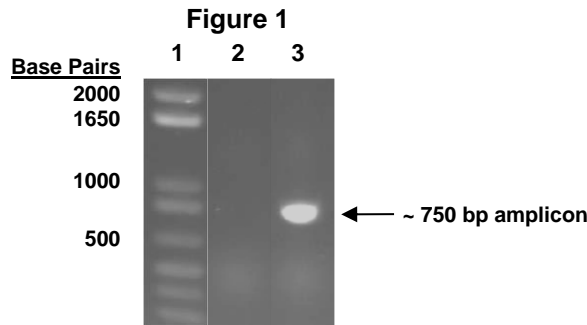
TEST	SPECIFICATIONS	RESULTS
<b>Sequencing of Species-Specific Region (720 nucleotides)</b>	Consistent with BRBV, Original Consistent with NR-50132	99% identity with BRBV, Original (GenBank: KP657749) Consistent with NR-50132
<b>Functional Activity by RT-PCR Amplification<sup>3</sup></b>	~ 750 bp amplicon	~ 750 bp amplicon (Figure 1)
<b>Total RNA Content by RiboGreen<sup>®</sup> Measurement (Viral, Cellular and Carrier)</b>	Report results	2.03 ng per 100 µL
<b>Virus Inactivation</b> 10% of total yield inoculated on Vero E6 cells <sup>1</sup> and evaluated for cytopathic effect <sup>4</sup>	No virus detected	No virus detected

<sup>1</sup>Vero E6 (ATCC<sup>®</sup> CRL-1586<sup>™</sup>)

<sup>2</sup>Nucleic acid was extracted from a preparation of BRBV, Original (BEI Resources NR-50132, Lot 64077566), using QIAamp<sup>®</sup> Viral RNA Mini Kit (Qiagen 52906).

<sup>3</sup>Amplified using iTaq<sup>™</sup> Universal SYBR<sup>®</sup> Green One-Step Kit (Bio-Rad 172-5150) with 5 µL of NR-50146 in a 50 µL reaction

<sup>4</sup>The extracted nucleic acid preparation was plated on Vero E6 cells and incubated for 7 days at 37°C and 5% CO<sub>2</sub>; cell lysate and supernatant from these cultures was blind passaged on fresh monolayers of Vero E6 cells and again incubated for 7 days at 37°C and 5% CO<sub>2</sub>.



Lane 1: Invitrogen<sup>™</sup> TrackIt<sup>™</sup> 1 Kb Plus DNA Ladder

Lane 2: Negative control

Lane 3: NR-50146

**Date:** 05 MAY 2017

**Signature:** *Michael R. Grynberg*

BEI Resources Authentication

ATCC<sup>®</sup>, on behalf of BEI Resources, hereby represents and warrants that the material provided under this certificate has been subjected to the tests and procedures specified and that the results described, along with any other data provided in this certificate, are true and accurate to the best of ATCC<sup>®</sup>'s knowledge.

ATCC<sup>®</sup> is a trademark of the American Type Culture Collection.

You are authorized to use this product for research use only. It is not intended for human use.

