

**Messenger RNA from *Schistosoma japonicum*, Chinese Strain, Eggs**

**Catalog No. NR-50737**

This reagent is the tangible property of the U.S. Government.

**Product Description:** NR-50737 is a preparation of messenger RNA (mRNA) extracted and purified from *Schistosoma japonicum* (*S. japonicum*), Chinese strain, eggs. Eggs were collected from the livers of mice that had been infected with *S. japonicum*, Chinese strain, cercariae.

**Lot<sup>1-3</sup>: 70004679**

**Manufacturing Date: 26JAN2017**

TEST	SPECIFICATIONS	RESULTS
Concentration	Report results	1.0 µg in 50 µL per vial (0.02 µg/µL)
OD <sub>260</sub> /OD <sub>280</sub> Ratio	1.85 to 2.00	2.3 <sup>4</sup>
Qualification by RT-PCR Amplification of 28S ribosomal RNA gene <sup>5</sup>	~ 290 base pair amplicon	~ 290 base pair amplicon (Figure 1)
Contamination by Mouse RNA by RT-PCR <sup>6</sup>	None detected	None detected

<sup>1</sup>QC testing was performed by the Biomedical Research Institute, Rockville, Maryland (NIH-NIAID Contract HHSN272201000005I).

<sup>2</sup>Messenger RNA was extracted and purified from total RNA by SMART<sup>®</sup> mRNA Amplification Kit (Clontech) according to the manufacturer's instructions.

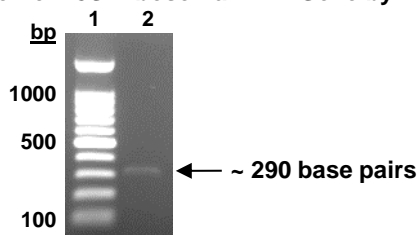
<sup>3</sup>Eggs were collected and pooled from mice, infected for at least 45 days with *S. japonicum*, Chinese strain, cercariae, by perfusion technique.

<sup>4</sup>The Biomedical Research Institute has not had any problems with samples that are slightly out of range of the current OD<sub>260</sub>/OD<sub>280</sub> specifications. Please [contact@beiresources.org](mailto:contact@beiresources.org) if there are any concerns with this lot and its suitability for your application.

<sup>5</sup>Primers were designed to amplify the nucleotide region 39 to 326 of *S. mansoni* 28S ribosomal RNA gene (GenBank: Z46503.1). Cross-amplification of the 28S gene from other *Schistosoma* species has been observed.

<sup>6</sup>This test confirms that no contamination from mouse genetic material occurred during egg collection.

**Figure 1: Amplification of 28S Ribosomal RNA Gene by RT-PCR**



Lane 1: 100 base pair ladder

Lane 2: 28S rRNA gene from NR-50737

**Date:** 18 JUL 2017

**Signature:**

BEI Resources Authentication

ATCC<sup>®</sup>, on behalf of BEI Resources, hereby represents and warrants that the material provided under this certificate has been subjected by the contributor to the tests and procedures specified and that the results described, along with any other data provided in this certificate, are true and accurate to the best of ATCC<sup>®</sup>'s knowledge.

ATCC<sup>®</sup> is a trademark of the American Type Culture Collection.

You are authorized to use this product for research use only. It is not intended for human use.

