

**Genomic DNA from *Candida albicans*, Strain 12C**

**Catalog No. NR-50307**

**Product Description:** Genomic DNA was extracted from a preparation of *Candida albicans* (*C. albicans*), strain 12C. *C. albicans*, strain 12C is an oral isolate from a vaginitis patient in Ann Arbor, Michigan, USA between 1990 and 1992.

**Lot<sup>1,2</sup>: 64158562**

**Manufacturing Date: 03JUN2016**

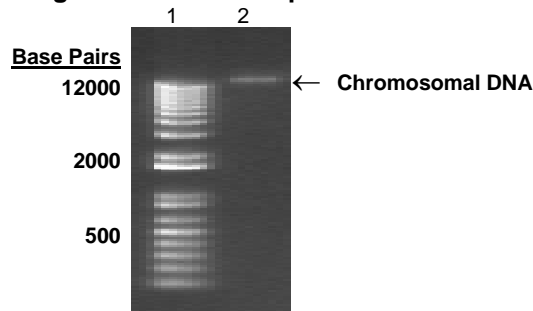
TEST	SPECIFICATIONS	RESULTS
<b>Genotypic Analysis</b> Partial 18S ribosomal RNA (rRNA) gene, internal transcribed spacer (ITS) 1, 5.8S rRNA gene, ITS 2, partial 28S rRNA (~ 500 base pairs) D1D2 region of the 28S rRNA gene (~ 590 base pairs)	≥ 99% sequence identity to <i>C. albicans</i> type strain (GenBank: CP017630.1) <sup>3</sup> ≥ 99% sequence identity to <i>C. albicans</i> type strain (GenBank: CP017630.1) <sup>3</sup>	100% sequence identity to <i>C. albicans</i> type strain (GenBank: CP017630.1) 100% sequence identity to <i>C. albicans</i> type strain (GenBank: CP017630.1)
<b>Agarose Gel Electrophoresis</b>	High molecular weight chromosomal DNA	High molecular weight chromosomal DNA (Figure 1)
<b>Concentration by PicoGreen® Measurement</b>	Report results	9.8 µg in 152 µL per vial (64 µg/mL)
<b>Amount per vial</b>	≥ 5 µg per vial	9.8 µg
<b>Functional Activity by PCR Amplification</b> Partial 28S ribosomal RNA gene	~ 1100 base pair amplicon	~ 1100 base pair amplicon
<b>OD<sub>260</sub>/OD<sub>280</sub> Ratio</b>	1.7 to 2.1	1.9

<sup>1</sup>The fungal preparation used for extraction of genomic DNA was produced from a culture of NRS-29444 (Lot 60282436). Genomic DNA was extracted using proprietary technology.

<sup>2</sup>NR-50307, Lot 64158562, was vialled in Tris-HCl EDTA buffer (10 mM Tris-HCl, 1 mM EDTA, pH ~ 8.0).

<sup>3</sup>Genomic sequence of *C. albicans*, strain 12C is available in GenBank, but does not contain the regions required for alignment.

**Figure 1: Agarose Gel Electrophoresis**



Lane 1: Invitrogen™ TrackIt 1 Kb Plus DNA Ladder™  
Lane 2: 320 ng of NR-50307

**Date:** 27 JUL 2017

**Signature:**

BEI Authentication or designee

ATCC®, on behalf of BEI Resources, hereby represents and warrants that the material provided under this certificate has been subjected to the tests and procedures specified and that the results described, along with any other data provided in this certificate, are true and accurate to the best of ATCC®'s knowledge.

ATCC® is a trademark of the American Type Culture Collection.

You are authorized to use this product for research use only. It is not intended for human use.

