

Genomic DNA from *Candida albicans*, Strain 19F

Catalog No. NR-50363

Product Description: Genomic DNA was extracted from a preparation of *Candida albicans* (*C. albicans*), strain 19F. *C. albicans*, strain 19F is a vaginal isolate from a person with vaginitis collected in Ann Arbor, Michigan, USA, between 1990 and 1992.

Lot^{1,2}: 64362133

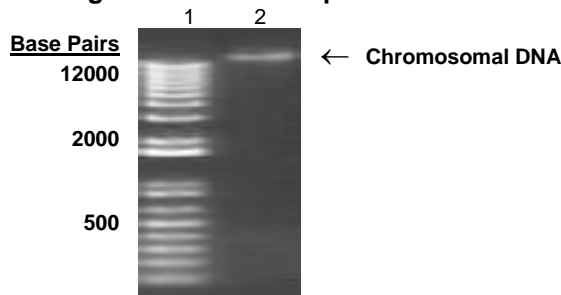
Manufacturing Date: 07JUN2016

TEST	SPECIFICATIONS	RESULTS
Genotypic Analysis Partial 18S ribosomal RNA (rRNA) gene, internal transcribed spacer (ITS) 1, 5.8S rRNA gene, ITS 2, partial 28S rRNA (~ 130 base pairs) D1D2 region of the 28S rRNA gene (~ 590 base pairs)	≥ 99% sequence identity to <i>C. albicans</i> , strain 19F (GenBank: AJIV01000059) ≥ 99% sequence identity to <i>C. albicans</i> , strain 19F (GenBank: AJIV01000059)	100% sequence identity to <i>C. albicans</i> , strain 19F (GenBank: AJIV01000059) 100% sequence identity to <i>C. albicans</i> , strain 19F (GenBank: AJIV01000059)
Agarose Gel Electrophoresis	High molecular weight chromosomal DNA	High molecular weight chromosomal DNA (Figure 1)
Concentration by PicoGreen® Measurement	Report results	5.9 µg in 120 µL per vial (50 µg/mL)
Amount per vial	≥ 5 µg per vial	5.9 µg
Functional Activity by PCR Amplification Partial 28S ribosomal RNA gene	~ 1100 base pair amplicon	~ 1100 base pair amplicon
OD₂₆₀/OD₂₈₀ Ratio	1.7 to 2.1	1.9

¹The fungal preparation used for extraction of genomic DNA was produced from a culture of NRS-29449 (Lot 60952572). Genomic DNA was extracted using proprietary technology.

²NR-50363, Lot 64362133, was vialled in Tris-HCl EDTA buffer (10 mM Tris-HCl, 1 mM EDTA, pH ~ 8.0).

Figure 1: Agarose Gel Electrophoresis



Lane 1: Invitrogen™ TrackIt 1 Kb Plus DNA Ladder™
 Lane 2: 250 ng of NR-50363

Date: 31 JUL 2017

Signature: 
 BEI Authentication or designee

ATCC®, on behalf of BEI Resources, hereby represents and warrants that the material provided under this certificate has been subjected to the tests and procedures specified and that the results described, along with any other data provided in this certificate, are true and accurate to the best of ATCC®'s knowledge.

ATCC® is a trademark of the American Type Culture Collection.
 You are authorized to use this product for research use only. It is not intended for human use.

