

***Escherichia coli*, Strain 1885-77**

Catalog No. NR-100

(Derived from ATCC® 43892™)

Product Description: The enteroinvasive *Escherichia coli* (EIEC) is a Gram-negative, rod-shaped bacterium which invades and multiplies within intestinal epithelial cells, resulting in a dysentery-like enteritis in humans, similar to that caused by *Shigella* species.

Lot¹: 3670406

Manufacturing Date: 07APR2004

TEST	SPECIFICATIONS	RESULTS
Phenotypic Analysis Cellular morphology Colony morphology Tryptic soy agar Hektoen enteric agar Sorbitol-MacConkey agar CHROMagar™ O157 Analytical profile index (API® 20 E)	Gram-negative rods Circular, low convex, entire, smooth, transparent Bright yellow-orange Report results Report results Consistent with <i>Escherichia coli</i>	Gram-negative rods Circular, low convex, entire, smooth, transparent Bright yellow-orange (see Figure 1A) Red (see Figure 1B) Mauve/blue (see Figure 1C) Consistent with <i>Escherichia coli</i>
Genotypic Analysis of Extracted Nucleic Acid Sequencing of 16S rRNA gene (~ 580 bp) PCR amplification of plasmid markers <i>invE</i> (pINV) <i>elt</i> (pJY11) <i>esth</i> and/or <i>estp</i> (pCS1) EAF (pEAF) <i>bfpA</i> (pEAF) CVD432 (pAA) <i>aggR</i> (pAA) PCR amplification of chromosomal markers <i>eeA</i> <i>stx1</i> <i>sx2</i> <i>astA</i>	Consistent with <i>Escherichia coli</i> Positive Negative Negative Negative Negative Negative Negative Negative Negative Negative Report results	Consistent with <i>Escherichia coli</i> Positive Negative Negative Negative Negative Negative Negative Negative Negative Negative Negative
Viability (post-freeze)³	Growth	Growth

¹NR-100 was produced by inoculation of ATCC® 43892™ into Trypticase Soy Broth (BD 211768).

²Also consistent with *Shigella* species.

³16 hours at 37°C and aerobic atmosphere in LB Broth (ATCC® 60-2100).

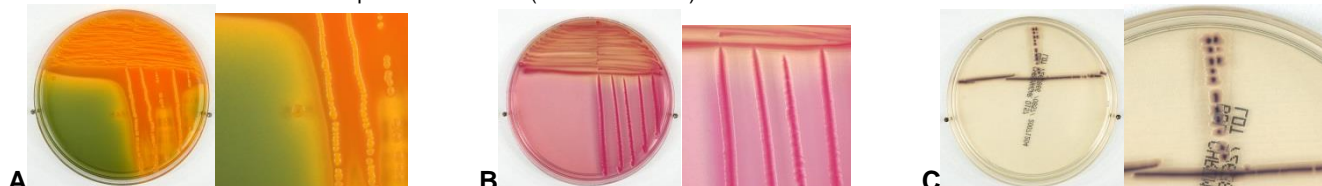


Figure 1

Date: 03 MAR 2008

Signature: Signature on File

Title: Technical Manager, BEI Authentication or designee

ATCC[®], on behalf of BEI Resources, hereby represents and warrants that the material provided under this certificate has been subjected to the tests and procedures specified and that the results described, along with any other data provided in this certificate, are true and accurate to the best of ATCC[®]'s knowledge.

ATCC[®] is a trademark of the American Type Culture Collection.

You are authorized to use this product for research use only. It is not intended for human use.

