

**Escherichia coli, Strain E2325**

**Catalog No. NR-22047**

**Product Description:** *Escherichia coli* (*E. coli*), strain E2325, was isolated in 1995 from cattle feces in Washington, USA, and is an O157:H7 serotype, enterohemorrhagic *E. coli* (EHEC).

**Lot<sup>1</sup>: 70005631**

**Manufacturing Date: 17MAY2017**

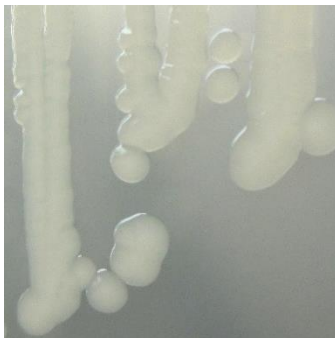
TEST	SPECIFICATIONS	RESULTS
<b>Phenotypic Analysis</b> Cellular morphology Colony morphology <sup>2</sup>  Motility (wet mount) VITEK <sup>®</sup> MS (MALDI-TOF)	Gram-negative rods Report results  Report results <i>E. coli</i>	Gram-negative rods Circular, low convex, entire, smooth and cream (Figure 1) Motile <i>E. coli</i> (99.9%)
<b>Genotypic Analysis</b> Sequencing of 16S ribosomal RNA gene (~ 790 base pairs)	≥ 99% sequence identity with <i>E. coli</i> type strain (GenBank: JMST01000030.1)	99.6% sequence identity with <i>E. coli</i> type strain (GenBank: JMST01000030.1)
<b>PCR Assay of Extracted DNA</b> 16S ribosomal RNA gene PCR amplification of chromosomal borne virulence markers <i>stx1</i> <i>stx2</i>	~ 1500 base pair amplicon  Report results Positive	~ 1500 base pair amplicon  Negative Positive
<b>Purity (post-freeze)<sup>3</sup></b>	Growth consistent with expected colony morphology	Growth consistent with expected colony morphology
<b>Viability (post-freeze)<sup>2</sup></b>	Growth	Growth

<sup>1</sup>The deposited material was inoculated into Nutrient broth and grown 1 day at 37°C in an aerobic atmosphere, and the resulting subculture was preserved in 10% glycerol. NR-22047 was produced by inoculation of the frozen subculture into Tryptic Soy broth and grown 1 day at 37°C in an aerobic atmosphere. Broth inoculum was added to Tryptic Soy agar kolles which were grown 1 day at 37°C in an aerobic atmosphere to produce this lot.

<sup>2</sup>1 day at 37°C in an aerobic atmosphere on Tryptic Soy agar

<sup>3</sup>Purity of this lot was assessed for 8 days at 37°C in an aerobic atmosphere with 5% CO<sub>2</sub> on Tryptic Soy agar.

**Figure 1: Colony Morphology**



**Date:** 20 NOV 2017

**Signature:**



BEI Resources Authentication

ATCC®, on behalf of BEI Resources, hereby represents and warrants that the material provided under this certificate has been subjected by the contributor to the tests and procedures specified and that the results described, along with any other data provided in this certificate, are true and accurate to the best of ATCC®'s knowledge.

ATCC® is a trademark of the American Type Culture Collection.  
You are authorized to use this product for research use only. It is not intended for human use.

