

³Percent probabilities above 89% indicate a close match to the typical biochemical pattern for the given organism, with a percent probability of 99% being a perfect match between the test reaction pattern and the unique biochemical pattern of the given organism or organism group. For additional information, please refer to O'Hara, C. M. and J. M. Miller. "Evaluation of the VITEK 2 ID-GNB Assay for Identification of Members of the Family Enterobacteriaceae and Other Nonenteric Gram-Negative Bacilli and Comparison with the VITEK GNI+ Card." *J. Clin. Microbiol.* 41 (2003): 2096-2101. PubMed: 12734254.

⁴MIC interpretation was determined using VITEK[®] 2 software version 07.01 combined with the bioMérieux Advanced Expert System™ (AES) software using the interpretation standard CLSI M100-S22 (2012) and the interpretation guideline "Natural Resistance." For more information, please refer to Sanders, C. C., et al. "Potential Impact of the VITEK 2 System and the Advanced Expert System on the Clinical Laboratory of a University-Based Hospital." *J. Clin. Microbiol.* 39 (2001): 2379-2385. PubMed: 11427542.

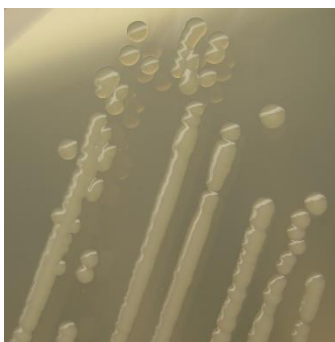
⁵1 day at 37°C in an aerobic atmosphere on Mueller Hinton agar

⁶Minimum Inhibitory Concentration (MIC); MIC Interpretation Guideline: CLSI M100-S22 (2012)

⁷Also consistent with other organisms

⁸Purity of this lot was assessed for 9 days at 37°C in an aerobic atmosphere with 5% CO₂ on Tryptic Soy agar with 5% defibrinated sheep blood.

Figure 1: Colony Morphology



Date: 02 JAN 2018

Signature:

BEI Resources Authentication

ATCC[®], on behalf of BEI Resources, hereby represents and warrants that the material provided under this certificate has been subjected to the tests and procedures specified and that the results described, along with any other data provided in this certificate, are true and accurate to the best of ATCC[®]'s knowledge.

ATCC[®] is a trademark of the American Type Culture Collection.

You are authorized to use this product for research use only. It is not intended for human use.

