

# Certificate of Analysis for MRA-151G

**Genomic DNA from *Plasmodium falciparum*, Strain 3D7A**

**Catalog No. MRA-151G**

**Product Description:** Genomic DNA was extracted from a preparation of *Plasmodium falciparum* (*P. falciparum*), strain 3D7A.

**Lot<sup>1,2</sup>: 62795257**

**Manufacturing Date: 15AUG2014**

TEST	SPECIFICATIONS	RESULTS
<b>Sequencing of Merozoite Surface Protein 2 (MSP2) gene (~ 720 base pairs)</b>	≥ 99% sequence identity to <i>P. falciparum</i> , strain 3D7 (GenBank: LN999943.1)	100% sequence identity to <i>P. falciparum</i> , strain 3D7 (GenBank: LN999943.1)
<b>Agarose Gel Electrophoresis</b>	High molecular weight chromosomal DNA	High molecular weight chromosomal DNA (Figure 1)
<b>Concentration by NanoDrop Measurement</b>	Report results	~ 500 ng in 50 µL per vial (10 ng/µL)
<b>Amount per Vial</b>	Report results	~ 500 ng
<b>Functional Activity by PCR Amplification MSP2 locus<sup>3</sup></b>	~ 600 to 900 base pair amplicon	~ 900 base pair amplicon
<b>OD<sub>260</sub>/OD<sub>280</sub> Ratio</b>	1.6 to 2.1	1.6

<sup>1</sup>MRA-151G was produced from a cell culture of BEI Resources MR-MRA-151 lot 59531004. Genomic DNA was extracted using proprietary technology. Note: MRA-1173G lot 61553006 has not been tested for protozoan inactivation; however, an extraction procedure was used that has been shown to consistently inactivate 100% of malaria parasites.

<sup>2</sup>MRA-151G lot 62795257 was vialled in TE buffer (10 mM Tris-HCl and 0.5 mM EDTA, pH 9).

<sup>3</sup>Primer sequences and conditions for PCR are available upon request.

**Date:** 24 JAN 2018

**Signature:**



BEI Resources Authentication

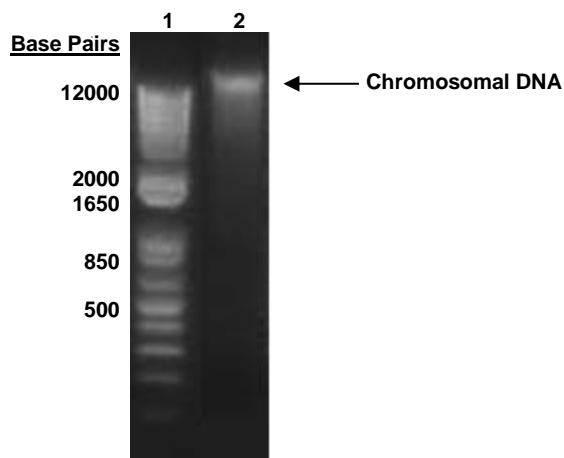
ATCC®, on behalf of BEI Resources, hereby represents and warrants that the material provided under this certificate has been subjected to the tests and procedures specified and that the results described, along with any other data provided in this certificate, are true and accurate to the best of ATCC®'s knowledge.

ATCC® is a trademark of the American Type Culture Collection.

You are authorized to use this product for research use only. It is not intended for human use.



Figure 1: Agarose Gel Electrophoresis



Lane 1: Invitrogen™ 1 Kb Plus DNA Ladder  
Lane 2: ~ 1000 ng of MRA-151G