

Monoclonal Anti-*Toxoplasma gondii* Rhoptry Neck Protein RON4, Clone T5 4H1 (produced *in vitro*)

Catalog No. NR-50268

Product Description: Antibody Class: IgG2ak

Mouse monoclonal antibody prepared against the rhoptry neck (RON) protein RON4 of *Toxoplasma gondii* (*T. gondii*) clone T5 4H1 was purified from the hybridoma supernatant by protein G affinity chromatography.

Lot¹: 70002906

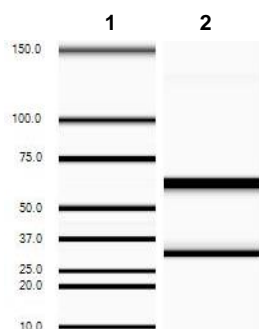
Manufacturing Date: 24MAR2017

TEST	SPECIFICATIONS	RESULTS
Antibody Class Determination	Report results	IgG2ak
Experion Pro260 Analysis Average Purity	Correct molecular weight (MW) for heavy and light chains Report results	Correct MW for heavy and light chains (Figure 1) 99.1% pure
Concentration by Spectrophotometer at OD₂₈₀	≥ 1.0 mg/mL	1.5 mg per mL
Functional Activity by Immunofluorescence Assay² <i>T. gondii</i> infected human skin fibroblast cells with NR-50268 <i>T. gondii</i> infected human skin fibroblast cells with FITC-conjugated goat anti-mouse IgG	Reactive Nonreactive	Reactive; immunostaining of rhoptries within parasitophorous vacuole (Figure 2) Nonreactive; no specific staining of parasites
Sterility	0.22 µm filter-sterilized	0.22 µm filter-sterilized

¹Mouse monoclonal antibody was purified by protein G affinity chromatography from supernatants obtained from mouse hybridoma clone T5 4H1 adapted to serum-free media.

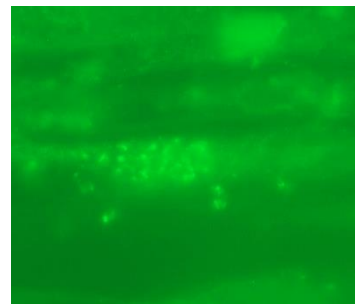
²Specific labeling of *T. gondii* cells with NR-50268 and FITC was observed after infection of human skin fibroblast cells (ATCC® CRL-1634™) with *T. gondii* (ATCC® PRA-310™). NR-50268 was used at a dilution of 1:500, followed by FITC-conjugated goat anti-mouse IgG (Invitrogen® A16073) as secondary antibody (1:2000).

Figure 1: Experion Pro260 Analysis



Lane 1: Pro260 Ladder
Lane 2: NR-50268

Figure 2: Immunofluorescence Assay of *T. gondii* Infected Fibroblast Cells



12 MAR 2018

Program Manager or designee, ATCC Federal Solutions

ATCC®, on behalf of BEI Resources, hereby represents and warrants that the material provided under this certificate has been subjected to the tests and procedures specified and that the results described, along with any other data provided in this certificate, are true and accurate to the best of ATCC®'s knowledge.

ATCC® is a trademark of the American Type Culture Collection.

You are authorized to use this product for research use only. It is not intended for human use.

