

Staphylococcus aureus, Strain SA-1199
Catalog No. NR-51188

Product Description: *Staphylococcus aureus* (*S. aureus*), strain SA-1199 was isolated around 1980 from the bloodstream of a patient with endocarditis in Ann Arbor, Michigan, USA. *S. aureus*, strain SA-1199 was deposited as the methicillin-susceptible and fluoroquinolone-susceptible parent strain of the fluoroquinolone-resistant derivative strain SA-1199B.

Lot¹: 70012680
Manufacturing Date: 08FEB2018

TEST	SPECIFICATIONS	RESULTS
Phenotypic Analysis Cellular morphology Colony morphology ² Motility (wet mount) Hemolysis ² Biochemical characterization Catalase VITEK [®] 2 Compact (GP card)	Gram-positive cocci Report results Report results Report results Positive <i>S. aureus</i> (≥ 89%)	Gram-positive cocci Circular, low convex, entire, smooth and cream (Figure 1) Non-motile β-hemolytic Positive <i>S. aureus</i> (99%)
Antibiotic Susceptibility Profile³ VITEK [®] (AST-GP71 card) Beta-lactamase ⁴ Cefoxitin screen Benzylpenicillin Oxacillin Gentamicin Ciprofloxacin Levofloxacin Moxifloxacin Clindamycin (inducible resistance) Erythromycin Clindamycin Quinupristin/dalfopristin Linezolid Daptomycin Vancomycin Minocycline Tetracycline Tigecycline Nitrofurantoin Rifampicin Trimethoprim/sulfamethoxazole Etest [®] antibiotic test strips ⁶ Oxacillin	Report results Report results Report results Sensitive Report results Sensitive Report results Report results Report results Report results Report results Report results Report results Report results Report results Report results Report results Report results Report results Report results Report results Report results Report results Report results Report results Sensitive	Positive Negative Resistant (= 0.25 µg/mL) Sensitive (≤ 0.25 µg/mL) Sensitive (≤ 0.5 µg/mL) Sensitive (≤ 0.5 µg/mL) Sensitive (≤ 0.12 µg/mL) Sensitive (≤ 0.25 µg/mL) Negative Sensitive (≤ 0.25 µg/mL) Sensitive (≤ 0.25 µg/mL) Sensitive (≤ 0.25 µg/mL) Sensitive (= 2 µg/mL) Sensitive (= 0.25 µg/mL) Sensitive (= 1 µg/mL) Sensitive (≤ 0.5 µg/mL) Sensitive (≤ 1 µg/mL) Sensitive (≤ 0.12 µg/mL) ⁵ Sensitive (≤ 16 µg/mL) Sensitive (≤ 0.5 µg/mL) Sensitive (≤ 10 µg/mL) Sensitive (= 0.16 µg/mL)
Genotypic Analysis Sequencing of 16S ribosomal RNA gene (~ 890 base pairs)	≥ 99% sequence identity to <i>S. aureus</i> type strain (GenBank: L37597)	100% sequence identity to <i>S. aureus</i> type strain (GenBank: L37597) ⁷
Purity (post-freeze)⁸	Consistent with expected colony morphology	Consistent with expected colony morphology
Viability (post-freeze)²	Growth	Growth

¹The deposited material was inoculated into Tryptic Soy broth, which was used to inoculate a Tryptic Soy agar plate and was grown 1 day at 37°C in an aerobic atmosphere. Colonies were then suspended in Tryptic Soy broth and preserved in 10% glycerol. NR-51188 was produced by inoculation

of the preserved material into Tryptic Soy broth and grown 1 day at 37°C in an aerobic atmosphere. Broth inoculum was added to Tryptic Soy agar with 5% defibrinated sheep blood kolles which were grown 1 day at 37°C in an aerobic atmosphere to produce this lot.

²1 day at 37°C in an aerobic atmosphere on Tryptic Soy agar with 5% defibrinated sheep blood

³Minimum Inhibitory Concentration (MIC); MIC Interpretation Guideline: CLSI M100-S22 (2012)

⁴The production of beta-lactamase was detected using a Cefinase™ Paper Disc (BBL™ 231650).

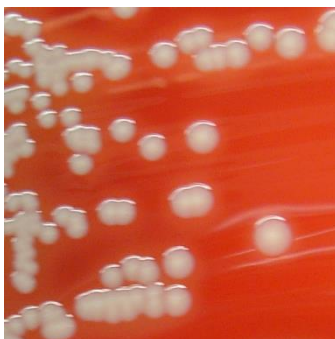
⁵MIC Interpretation Guideline: EUCAST Version 4.0 (2014)

⁶1 day at 37°C in an aerobic atmosphere on Mueller Hinton agar

⁷Also consistent with other *Staphylococcus* species

⁸Purity of this lot was assessed for 8 days at 37°C in an aerobic atmosphere with 5% CO₂ on Tryptic Soy agar with 5% defibrinated sheep blood.

Figure 1: Colony Morphology



26 MAR 2018

Program Manager or designee, ATCC Federal Solutions

ATCC®, on behalf of BEI Resources, hereby represents and warrants that the material provided under this certificate has been subjected to the tests and procedures specified and that the results described, along with any other data provided in this certificate, are true and accurate to the best of ATCC®'s knowledge.

ATCC® is a trademark of the American Type Culture Collection.

You are authorized to use this product for research use only. It is not intended for human use.

