

**Ferret Orthologue of *Homo sapiens* TLR4, Forward Primer**

**Catalog No. NR-8191**

This reagent is the tangible property of the U.S. Government.

**Product Description:** NR-8191 pairs with NR-8192 to amplify the ferret (*Mustela putoris furo*) orthologue of *Homo sapiens* TLR4 (toll-like receptor 4), (NCBI GenelD: 7099).

**Lot: 1117**

**Manufacturing Date: 14MAY2007**

TEST	SPECIFICATIONS	RESULTS
<b>PCR Amplification<sup>1</sup></b> Recommended primer concentration Observed C <sub>T</sub> Product T <sub>m</sub>	Report results Report results Report results	500 nM 26.1 (see Figure 1) 81.5°C (see Figure 2)
<b>Amplification and Sequence Verification<sup>2</sup></b>	TLR4	TLR4
<b>Content (OD<sub>260</sub>)</b>	Report results	1.51
<b>Content (µg)</b>	Report results	44.24
<b>Content (pmol)</b>	Report results	7136.02
<b>Volume Needed for 100 µM Solution (µL)</b>	Report results	71.36
<b>Purity by HPLC</b>	> 75%	88.57% (see Figure 3)

<sup>1</sup>Real-time PCR assay with a standard cDNA template derived from mitogen-activated ferret (*Mustela putoris furo*) PBMCs, splenocytes and lung tissue.

<sup>2</sup>The PCR product of the target gene was cloned into pCR®2.1-TOPO®. Plasmid DNA was sequenced using the M13 reverse primer. Sequence identities were verified by BLASTN analysis against the NCBI database.

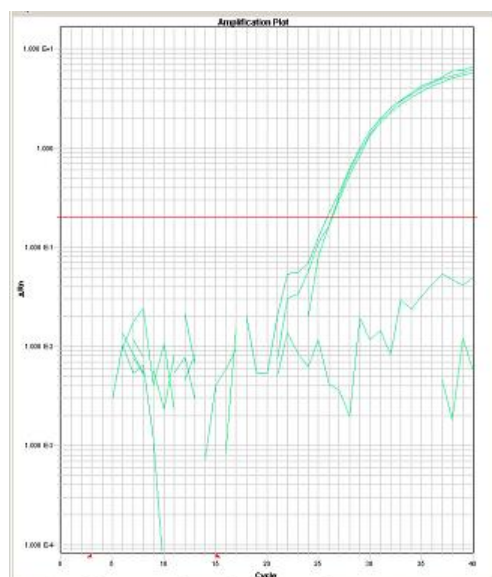


Figure 1. Amplicon amplification (ΔRh versus Cycle Number).

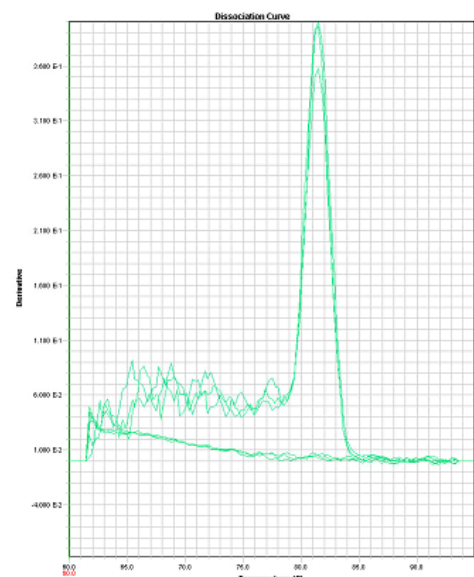


Figure 2. Amplicon dissociation (Derivative versus Temperature (°C)).

**Biodefense and Emerging Infections Research Resources Repository**

P.O. Box 4137  
Manassas, VA 20108-4137 USA

[www.beiresources.org](http://www.beiresources.org)

800-359-7370

Fax: 703-365-2898

E-mail: [contact@beiresources.org](mailto:contact@beiresources.org)

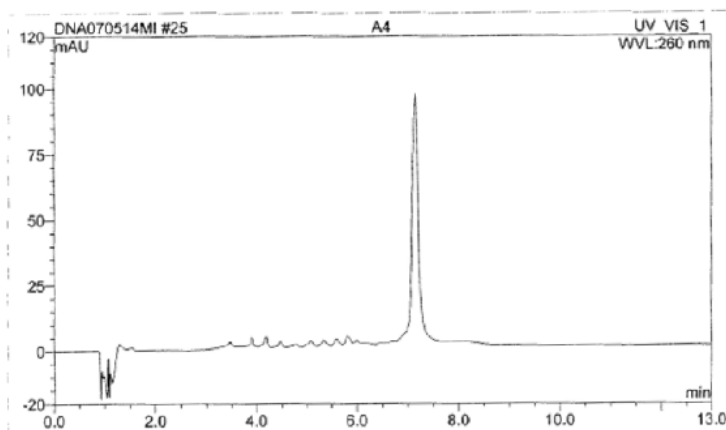


Figure 3. HPLC trace of purified oligonucleotide (Absorbance versus Elution Time).

**Date:** 31 JAN 2008

**Signature:** Signature on File

**Title:** Technical Manager, BEI Authentication or designee

ATCC®, on behalf of BEI Resources, hereby represents and warrants that the material provided under this certificate has been subjected by the contractor to the tests and procedures specified and that the results described, along with any other data provided in this certificate, are true and accurate to the best of ATCC®'s knowledge.

ATCC® is a trademark of the American Type Culture Collection.

You are authorized to use this product for research use only. It is not intended for human use.

