

Genomic DNA from *Escherichia coli*, Strain E2539C1

Catalog No. NR-3043

Product Description: Genomic DNA was isolated from a preparation of enterotoxigenic *Escherichia coli* (ETEC), strain E2539C1, serotype O25:K98:NM.

Lot¹: 7559641

Manufacturing Date: 09AUG2006

TEST	SPECIFICATIONS	RESULTS
Sequencing of 16S Ribosomal RNA Gene (~ 1375 bp)	Consistent with <i>Escherichia coli</i>	Consistent with <i>Escherichia coli</i> ²
Agarose Gel Electrophoresis	High molecular weight chromosomal DNA	High molecular weight chromosomal DNA (Figure 1)
Concentration by PicoGreen[®] Measurement	4 to 6 µg in 25 to 100 µL per vial	5.4 µg in 42 µL per vial (128 µg/mL)
Functional Activity by PCR Amplification 16S ribosomal RNA gene	~ 1500 bp amplicon	~ 1500 bp amplicon
OD₂₆₀/OD₂₈₀ Ratio	1.7 to 1.9	1.9
Bacterial Inactivation 10% of total yield plated on Tryptic Soy Agar ^{4,5}	No viable bacteria detected	No viable bacteria detected

¹The bacterial preparation used for extraction of genomic DNA was produced by inoculation of BEI Resources NR-5 (Lot: 3561330) onto Tryptic Soy Agar. After incubation for 20 hours at 37°C, genomic DNA was extracted using proprietary technology.

²Also consistent with *Shigella* species.

³Kimata, K., et al. "Rapid Categorization of Pathogenic *Escherichia coli* by Multiplex PCR." *Microbiol. Immunol.* 49 (2005): 485–492. PubMed: 15965295.

⁴7 days at 37°C in an aerobic atmosphere.

⁵An extraction procedure was used that has been shown to consistently inactivate 100% of Gram-negative bacteria.

Date: 10 June 2008

Signature: Signature on file

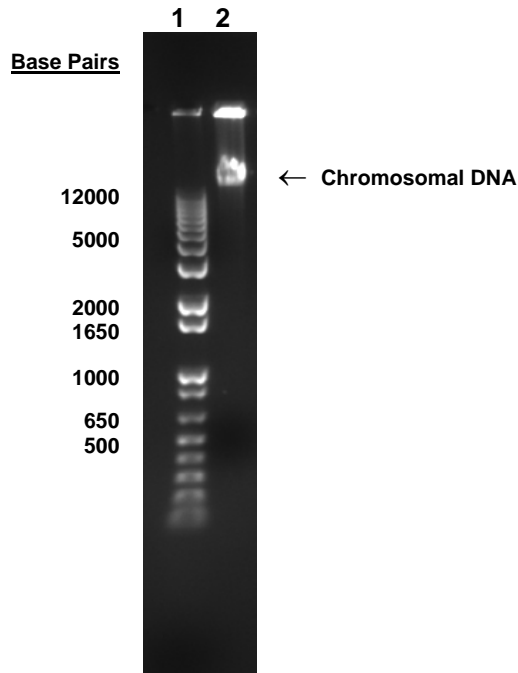
Title: Technical Manager, BEI Authentication or designee

ATCC[®], on behalf of BEI Resources, hereby represents and warrants that the material provided under this certificate has been subjected to the tests and procedures specified and that the results described, along with any other data provided in this certificate, are true and accurate to the best of ATCC[®]'s knowledge.

ATCC[®] is a trademark of the American Type Culture Collection.

You are authorized to use this product for research use only. It is not intended for human use.

Figure 1



Lane 1: Invitrogen™ 1Kb Plus DNA Ladder™
Lane 2: 200 ng of NR-3043