

LpqH, Recombinant Protein Reference Standard

Catalog No. NR-50757

This reagent is the tangible property of the U.S. Government.

Product Description: NR-50757 is a recombinant form of the conserved 19 kDa lipoprotein antigen precursor, LpqH, from *Mycobacterium tuberculosis*. The recombinant protein consists of the native protein sequence in addition to a hexa-histidine tag. LpqH was expressed in *Escherichia coli* (*E. coli*) and purified using standard chromatographic techniques followed by endotoxin removal procedures.

Lot¹: 70007907

Manufacturing Date: 23JAN2018

TEST	SPECIFICATIONS	RESULTS
Appearance	Report results	Clear and colorless; no particulate matter
SDS-PAGE (Coomassie Blue Stain)	Protein band of interest represents > 90% of total staining intensity	Dominant band of ~ 19 kDa accounts for > 90% of total staining intensity (Figure 1)
Concentration by Bicinchoninic Acid Protein Assay²	Report results	0.31 mg per mL
Final Product Quantity per vial Volume per vial	Report results Report results	0.4 mg 1.3 mL
Western Blot Analysis Monoclonal anti-hexa-histidine tag ³	Reactive	Reactive (Figure 2)
Endotoxin Content Limulus Amoebocyte Lysate Assay ⁴	1 to 1000 EU/mg	11.94 EU/mg protein
Sterility⁵	0.2 µm sterile-filtered	0.2 µm sterile-filtered

¹LpqH was harvested and purified from *E. coli* BL21 (DE3) pLysS cells transformed with BEI Resources NR-13302 lot 59415500.

²Using BSA as a standard

³Clontech, Catalog Number 631212 (1:1000 dilution)

⁴Endosafe®-PTS Cartridge, Charles River Laboratories, Inc., Catalog Number PTSR005F

⁵Material was filter-sterilized prior to vialing.

Figure 1: SDS-PAGE of LpqH

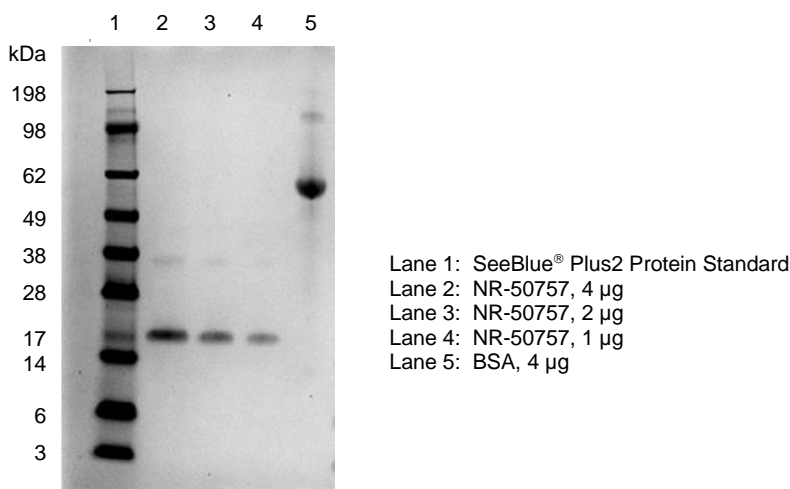
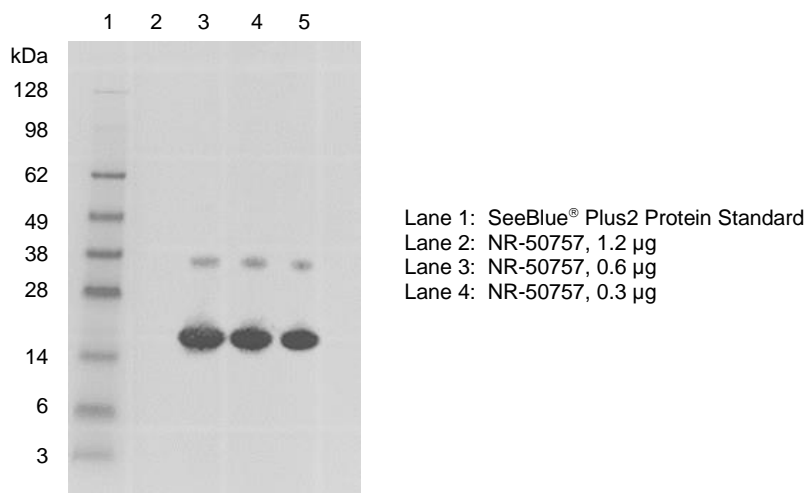


Figure 2: Western Blot with Monoclonal Anti-Histidine Tag



25 MAY 2018

Program Manager or designee, ATCC Federal Solutions

ATCC®, on behalf of BEI Resources, hereby represents and warrants that the material provided under this certificate has been subjected by to the tests and procedures specified and that the results described, along with any other data provided in this certificate, are true and accurate to the best of ATCC®'s knowledge.

ATCC® is a trademark of the American Type Culture Collection.

You are authorized to use this product for research use only. It is not intended for human use.

