

**Japanese Encephalitis Virus, PRS 222682**

**Catalog No. NR-2325**

**Product Description:** Cell lysate and supernatant from African green monkey kidney (Vero) cells<sup>1</sup> infected with Japanese encephalitis virus (JEV), PRS 222682.

**Lot<sup>2</sup>: 58138630**

**Manufacturing Date: 15APR2008**

TEST	SPECIFICATIONS	RESULTS
Identification by Infectivity in Vero Cells <sup>1</sup>	Report results	Cell rounding and sloughing (Figure 1)
Identification by Indirect Fluorescent Antibody Assay <sup>3</sup>	Fluorescence observed	Fluorescence observed
Sequencing of JEV Specific Sequence (~ 825 bp)	Consistent with JEV	Consistent with JEV
Titer by TCID <sub>50</sub> Assay <sup>4,5</sup> in Vero Cells <sup>1</sup>	Report results	8.9 X 10 <sup>7</sup> TCID <sub>50</sub> /mL
RT-PCR Assay of Extracted RNA Using JEV Specific Primers	~ 1750 bp amplicon	~ 1750 bp amplicon
<b>Sterility (21-day incubation)</b> Harpo's HTYE broth <sup>6</sup> , 37°C and 26°C, aerobic Trypticase soy broth, 37°C and 26°C, aerobic Sabouraud broth, 37°C and 26°C, aerobic Sheep blood agar, 37°C, aerobic Sheep blood agar, 37°C, anaerobic Thioglycollate broth, 37°C, anaerobic DMEM with 10% FBS, 37°C and 5% CO <sub>2</sub>	No growth No growth No growth No growth No growth No growth No growth No growth	No growth No growth No growth No growth No growth No growth No growth No growth
<b>Mycoplasma Contamination</b> Agar and broth culture (14-day incubation at 37°C) DNA Detection by PCR of Test Article nucleic acid	None detected None detected	None detected None detected

<sup>1</sup>Vero cells: ATCC<sup>®</sup> CCL-81™.

<sup>2</sup>Grown in Minimum Essential Medium containing Earle's salts and non-essential amino acids (Invitrogen™ 10370-021) supplemented with 2% irradiated fetal bovine serum (Cambrex<sup>®</sup> 14-471F), 2 mM L-glutamine (Invitrogen™ 25030-081), and 1 mM sodium pyruvate (Invitrogen™ 11360-070) for 5 days at 37°C and 5% CO<sub>2</sub>.

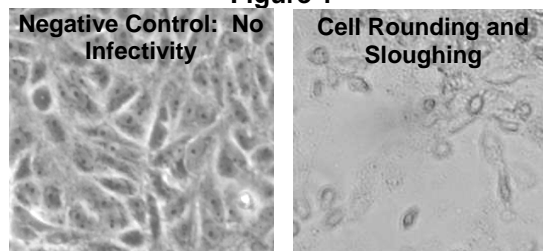
<sup>3</sup>Using monoclonal antibody reactive with JEV (Millipore MAB8743).

<sup>4</sup>The Tissue Culture Infectious Dose 50% (TCID<sub>50</sub>) endpoint is the 50% infectious endpoint in cell culture. The TCID<sub>50</sub> is the dilution of virus that under the conditions of the assay can be expected to infect 50% of the culture vessels inoculated, just as a Lethal Dose 50% (LD<sub>50</sub>) is expected to kill half of the animals exposed. A reciprocal of the dilution required to yield the TCID<sub>50</sub> provides a measure of the titer (or infectivity) of a virus preparation.

<sup>5</sup>7 days at 37°C and 5% CO<sub>2</sub>.

<sup>6</sup>Atlas, Ronald M. *Handbook of Microbiological Media*. 3rd ed. Ed. Lawrence C. Parks. Boca Raton: CRC Press, 2004, p. 798.

**Figure 1**



**Date:** 30 JUL 2008

**Signature:** Signature on File

**Title:** Technical Manager, BEI Authentication or designee

ATCC<sup>®</sup>, on behalf of BEI Resources, hereby represents and warrants that the material provided under this certificate has been subjected to the tests and procedures specified and that the results described, along with any other data provided in this certificate, are true and accurate to the best of ATCC<sup>®</sup>'s knowledge.

ATCC<sup>®</sup> is a trademark of the American Type Culture Collection.

You are authorized to use this product for research use only. It is not intended for human use.

