

Genomic DNA from *Yersinia pestis*, Strain Yokohama Derivative 10 (D10)

Catalog No. NR-4716

Product Description: Genomic DNA was isolated from a preparation of *Yersinia pestis* (*Y. pestis*), strain Yokohama derivative 10 (D10).

Lot¹: 57665535

Manufacturing Date: 24JUL2007

TEST	SPECIFICATIONS	RESULTS
Sequencing of 16S Ribosomal RNA Gene (~ 1420 bp)	Identical to BEI Resources NR-4692 Consistent with <i>Y. pestis</i>	Identical to BEI Resources NR-4692 Consistent with <i>Y. pestis</i> ²
Presence of Plasmids Confirmed by PCR Amplification pMT1 (pFra; ~ 100 kb plasmid) pCD1 (pYV; ~ 70 kb plasmid) pPCP1 (pPla; ~ 9.5 kb plasmid)	Positive Negative Positive	Positive Negative Positive
Agarose Gel Electrophoresis	High molecular weight chromosomal DNA	High molecular weight chromosomal DNA (Figure 1)
Concentration by PicoGreen® Measurement	4 to 6 µg in 25 to 100 µL per vial	4.9 µg in 33 µL per vial (150 µg/mL)
Functional Activity by PCR Amplification 16S ribosomal RNA gene Virulence-associated plasmids pMT1 (pFra; ~ 100 kb plasmid) pCD1 (pYV; ~ 70 kb plasmid) pPCP1 (pPla; ~ 9.5 kb plasmid)	~ 1500 bp amplicon ~ 1200 bp amplicon None detected ~ 400 bp amplicon	~ 1500 bp amplicon ~ 1200 bp amplicon None detected ~ 400 bp amplicon
OD₂₆₀/OD₂₈₀ Ratio	1.7 to 1.9	1.9
Bacterial Inactivation 10% of total yield plated on Tryptic Soy Agar ^{3,4}	No viable bacteria detected	No viable bacteria detected

¹*Y. pestis*, strain Yokohama(D10) was deposited by Professor Robert R. Brubaker of the Department of Microbiology and Molecular Genetics at Michigan State University, East Lansing, Michigan. The bacterial preparation used for extraction of genomic DNA was produced by broth (Tryptic Soy Broth; BD 211768) culture of the deposited material. After incubation for 48 hours at 28°C and aerobic atmosphere, genomic DNA was extracted using proprietary technology.

²Also consistent with other *Yersinia* species

³7 days at 28°C in an aerobic atmosphere

⁴An extraction procedure was used that has been shown to consistently inactivate 100% of Gram-negative bacteria.

Date: 12 AUG 2008

Signature: Signature on File

Title: Technical Manager, BEI Authentication or designee

ATCC®, on behalf of BEI Resources, hereby represents and warrants that the material provided under this certificate has been subjected to the tests and procedures specified and that the results described, along with any other data provided in this certificate, are true and accurate to the best of ATCC®'s knowledge.

ATCC® is a trademark of the American Type Culture Collection.

You are authorized to use this product for research use only. It is not intended for human use.



Biodefense and Emerging Infections Research Resources Repository

P.O. Box 4137

Manassas, VA 20108-4137 USA

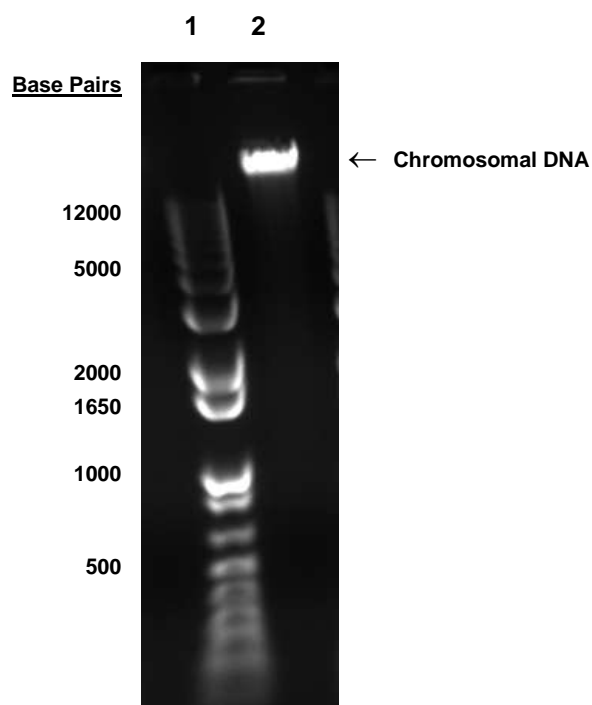
www.beiresources.org

800-359-7370

Fax: 703-365-2898

E-mail: contact@beiresources.org

Figure 1



Lane 1: Invitrogen™ TrackIt™ 1 Kb Plus DNA Ladder
Lane 2: 200 ng of NR-4716