

## Genomic DNA from *Listeria monocytogenes*, Strain Li 21

**Catalog No. NR-4211**

**Product Description:** Genomic DNA was obtained from a preparation of *Listeria monocytogenes* (*L. monocytogenes*), strain Li 21. Li 21 is a serotype 1/2c strain and was originally isolated from human cerebrospinal fluid in Scotland.

**Lot<sup>1</sup>: 58263159**

**Manufacturing Date: 24JUL2008**

TEST	SPECIFICATIONS	RESULTS
<b>Sequencing of 16S Ribosomal RNA Gene</b> (~ 1390 bp)	Consistent with <i>L. monocytogenes</i>	Consistent with <i>L. monocytogenes</i> <sup>2</sup>
<b>Agarose Gel Electrophoresis</b>	High molecular weight chromosomal DNA	High molecular weight chromosomal DNA (Figure 1)
<b>Concentration by PicoGreen<sup>®</sup> Measurement</b>	4 to 6 µg in 25 to 100 µL per vial	5.3 µg in 100 µL per vial (51.6 µg/mL)
<b>Functional Activity by PCR Amplification</b> 16S ribosomal RNA gene	~ 1500 bp amplicon	~ 1500 bp amplicon
<b>OD<sub>260</sub>/OD<sub>280</sub> Ratio</b>	1.7 to 1.9	1.7
<b>Bacterial Inactivation</b> 10% of total yield plated on Tryptic Soy Agar with 5% sheep blood <sup>3,4</sup>	No viable bacteria detected	No viable bacteria detected

<sup>1</sup>NR-4211 was prepared by Brain Heart Infusion broth (BD 237500) culture of NR-107 (Lot: 3655718). After incubation for 24 hours at 37°C in an aerobic atmosphere, genomic DNA was extracted using proprietary technology.

<sup>2</sup>Also consistent with other *Listeria* species.

<sup>3</sup>7 days at 37°C in an aerobic atmosphere.

<sup>4</sup>An extraction procedure was used that has been shown to consistently inactivate 100% of Gram-negative bacteria.

**Date:** 07 OCT 2008

**Signature:** Signature on File

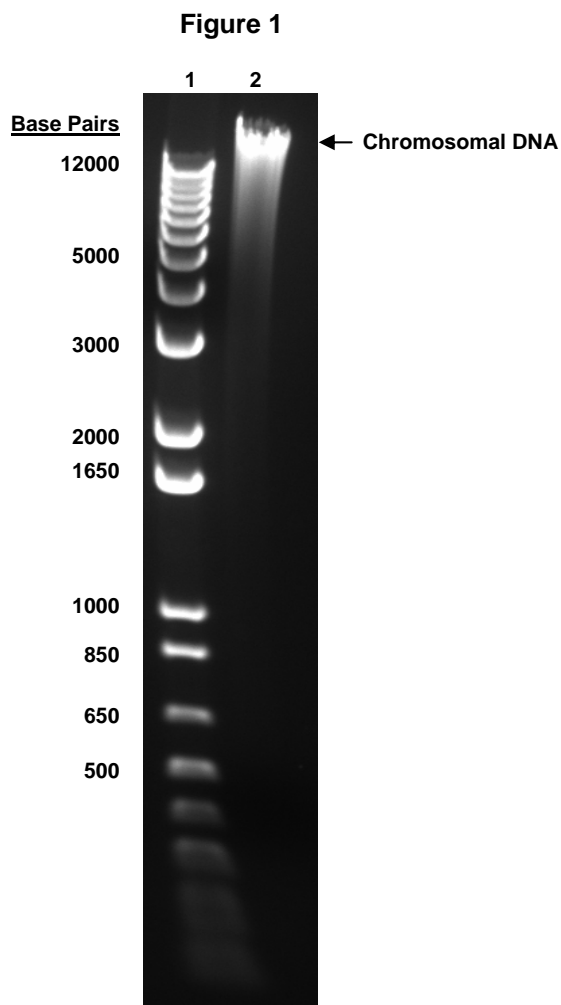
**Title:** Technical Manager, BEI Authentication or designee

ATCC<sup>®</sup>, on behalf of BEI Resources, hereby represents and warrants that the material provided under this certificate has been subjected to the tests and procedures specified and that the results described, along with any other data provided in this certificate, are true and accurate to the best of ATCC<sup>®</sup>'s knowledge.

ATCC<sup>®</sup> is a trademark of the American Type Culture Collection.

You are authorized to use this product for research use only. It is not intended for human use.





Lane 1: Invitrogen™ TrackIt™ 1 Kb Plus DNA Ladder  
Lane 2: 200 ng of NR-4211