

**Genomic DNA from *Rickettsia rickettsii*, Strain Bitterroot**

**Catalog No. NR-48826**

**Product Description:** Genomic DNA was extracted from a preparation of cell lysate and supernatant from *Cercopithecus aethiops* kidney epithelial cells<sup>1</sup> infected with *Rickettsia rickettsii* (*R. rickettsii*), strain Bitterroot (also known as strain R).

**Lot<sup>2</sup>: 62811789**

**Manufacturing Date: 19DEC2014**

TEST	SPECIFICATIONS	RESULTS
<b>Genotypic Analysis</b> Sequencing of 16S ribosomal RNA gene (~ 1340 base pairs)	≥ 99% sequence identity to <i>R. rickettsii</i> , strain Bitterroot (GenBank: CP006009.1)	99.9% sequence identity to <i>R. rickettsii</i> , strain Bitterroot (GenBank: CP006009.1) <sup>3</sup>
<b>Pre-vial Concentration by PicoGreen<sup>®</sup> Measurement (Bacterial and Cellular)<sup>4</sup></b>	Report Results	11.4 ng in 100 µL per vial (0.114 µg/mL)
<b>Estimated Amount per Vial<sup>4</sup></b>	Report Results	11.4 ng
<b>Functional Activity by PCR Amplification</b> 16S ribosomal RNA gene	~ 1500 base pair amplicon	~ 1500 base pair amplicon (Figure 1)
<b>Bacterial Inactivation</b> 10% of total yield inoculated on CCL-81 cells <sup>1</sup> and evaluated by CPE and PCR <sup>5,6</sup>	No viable bacteria detected	No viable bacteria detected

<sup>1</sup>Vero cells: ATCC<sup>®</sup> CCL-81<sup>™</sup>

<sup>2</sup>The bacterial preparation used for extraction of genomic DNA was produced by culture of NR-393 lot 58362778. Genomic DNA was extracted using proprietary technology.

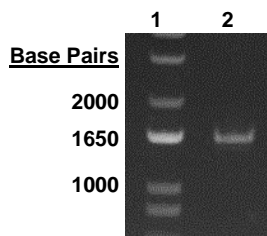
<sup>3</sup>Also consistent with other *Rickettsia* species

<sup>4</sup>Measurement is determined pre-vial prior to dilution due to the limit of detection of the quantification method.

<sup>5</sup>7 days at 34°C and 5% CO<sub>2</sub>

<sup>6</sup>The QIAamp<sup>®</sup> Viral RNA Mini Kit has been shown to consistently inactivate 100% of *Rickettsia* species

**Figure 1: Functional Activity of NR-48826 by PCR Amplification of 16S RNA Gene**



Lane 1: Invitrogen<sup>™</sup> TrackIt 1 Kb Plus DNA Ladder<sup>™</sup>

Lane 2: PCR product from 1µL of NR-48826

/Heather Couch/

Heather Couch

05 SEP 2018

Program Manager or designee, ATCC Federal Solutions

ATCC<sup>®</sup>, on behalf of BEI Resources, hereby represents and warrants that the material provided under this certificate has been subjected to the tests and procedures specified and that the results described, along with any other data provided in this certificate, are true and accurate to the best of ATCC<sup>®</sup>'s knowledge.

ATCC<sup>®</sup> is a trademark of the American Type Culture Collection.

You are authorized to use this product for research use only. It is not intended for human use.

