

Genomic DNA from *Anaplasma phagocytophilum*, Strain NCH-1

Catalog No. NR-51150

Product Description: Genomic DNA was isolated from a preparation of cell lysate and supernatant from human promyelocytic leukemia cells (HL-60 cells; ATCC® CCL-240™) infected with *Anaplasma phagocytophilum* (*A. phagocytophilum*), strain NCH-1.

Lot¹: 70010364

Manufacturing Date: 12APR2018

TEST	SPECIFICATIONS	RESULTS
Genotypic Analysis Sequencing of 16S ribosomal RNA gene (~ 1370 base pairs)	≥ 99% sequence identity to <i>A. phagocytophilum</i> , strain NCH-1 (GenBank: LANT01000009.1)	99.9% sequence identity to <i>A. phagocytophilum</i> , strain NCH-1 (GenBank: LANT01000009.1) ²
Pre-vial Concentration by PicoGreen® Measurement (Bacterial and Cellular)³	Report results	0.65 ng in 100 µL per vial (0.0065 µg/mL)
Estimated Amount per Vial³	Report results	0.65 ng
Functional Activity by PCR Amplification 16S ribosomal RNA gene	≥ 1000 base pair amplicon; single band	~ 1500 base pair amplicon; single band (Figure 1)
Bacterial Inactivation 10% of total yield inoculated on HL-60 cells and evaluated by IFA ⁴⁻⁶	No viable bacteria detected	No viable bacteria detected

¹The bacterial preparation used for extraction of genomic DNA was produced by culture of NR-48807 lot 70007009. Genomic DNA was extracted using proprietary technology. All QC tests were completed prior to vialing.

²Also consistent with *Ehrlichia equi* and "HGE agent", however, these species were recently recognized as *A. phagocytophilum*. For more information, please see Dumler, J. S., et al. "Reorganization of Genera in the Families Rickettsiaceae and Anaplasmataceae in the Order Rickettsiales: Unification of Some Species of *Ehrlichia* with *Anaplasma*, *Cowdria* with *Ehrlichia* and *Ehrlichia* with *Neorickettsia*, Descriptions of Six New Species Combinations and Designation of *Ehrlichia equi* and 'HGE agent' as Subjective Synonyms of *Ehrlichia phagocytophila*." *Int. J. Syst. Evol. Microbiol.* 51 (2001): 2145-2165. PubMed: 11760958.

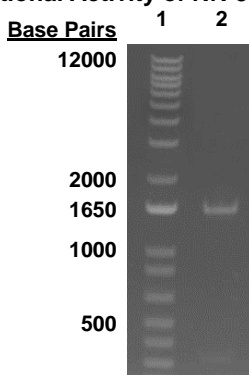
³Measurement is determined pre-vial prior to dilution due to the limit of detection of the quantification method.

⁴11 days at 37°C and 5% CO₂

⁵Using *Anaplasma phagocytophilum* IFA IgG reagents (Fuller Laboratories EEDP and HCG-25)

⁶An extraction procedure was used that has been shown to consistently inactivate 100% of *Anaplasma* spp.

Figure 1: Functional Activity of NR-51150 by PCR Amplification



Lane 1: Invitrogen™ TrackIt 1 Kb Plus DNA Ladder™
Lane 2: 16S PCR product from 1µL of NR-51150

/Heather Couch/
Heather Couch

19 SEP 2018

Program Manager or designee, ATCC Federal Solutions

ATCC®, on behalf of BEI Resources, hereby represents and warrants that the material provided under this certificate has been subjected to the tests and procedures specified and that the results described, along with any other data provided in this certificate, are true and accurate to the best of ATCC®'s knowledge.

ATCC® is a trademark of the American Type Culture Collection.

You are authorized to use this product for research use only. It is not intended for human use.

