

**Monoclonal Anti-Shiga Toxin Type 2 Subunit B, Clone 1E8-A6 (produced *in vitro*)**

**Catalog No. NR-51208**

This reagent is the tangible property of the U.S. Government.

**Product Description:** Antibody Class: IgG1k

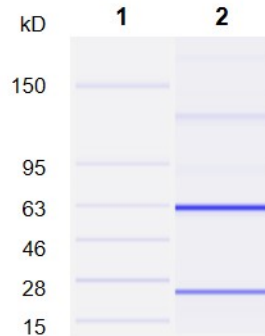
Mouse monoclonal antibody to a recombinant form of the B subunit of Shiga-like toxin type 2 (Stx2) was produced in clone 1E8-A6 hybridoma and purified by protein G affinity chromatography.

**Lot: 70013900**

**Manufacturing Date: 09MAY2018**

| TEST  | SPECIFICATIONS   | RESULTS  |
|---|--|--|
| Antibody Class Determination                            | IgG1k  | IgG1k  |
| Agilent® Protein 230 Analysis                           | Correct molecular weight (MW) for heavy and light chains<br>Report results | Correct MW for heavy and light chains (Figure 1)<br>88.9% pure |
| Concentration by Spectrophotometer at OD <sub>280</sub> | Report results   | 1.0 mg/mL  |
| Sterility   | 0.22 µm filter-sterilized  | 0.22 µm filter-sterilized                                      |

**Figure 1: Agilent® Protein 230 Analysis**



Lane 1: Agilent® Protein 230 Ladder  
Lane 2: NR-51208

/Heather Couch/  
Heather Couch

09 OCT 2018

Program Manager or designee, ATCC Federal Solutions

ATCC®, on behalf of BEI Resources, hereby represents and warrants that the material provided under this certificate has been subjected to the tests and procedures specified and that the results described, along with any other data provided in this certificate, are true and accurate to the best of ATCC®'s knowledge.

ATCC® is a trademark of the American Type Culture Collection.

You are authorized to use this product for research use only. It is not intended for human use.

