

Monoclonal Anti-*Leishmania donovani*/*Leishmania infantum*/*Leishmania chagasi*, Strain Edmael (MHOM/BR/00/Edmael), Clone D2 (produced *in vitro*)

Catalog No. NR-50153

Product Description: Antibody Class: IgG1k

Mouse monoclonal antibody prepared against *Leishmania donovani*/*Leishmania infantum*/*Leishmania chagasi*, strain Edmael (MHOM/BR/00/Edmael), clone D2 was purified from the hybridoma supernatant by protein G affinity chromatography.

Lot¹: 70013091

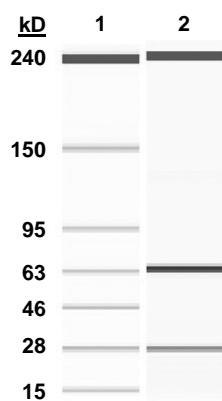
Manufacturing Date: 23MAR2018

TEST	SPECIFICATIONS	RESULTS
Antibody Class Determination	Report results	IgG1k
Agilent® Protein 230 Analysis Average Purity	Correct molecular weight (MW) for heavy and light chains Report results	Correct MW for heavy and light chains (Figure 1) 99.3% pure
Concentration by Spectrophotometer at OD₂₈₀	≥ 1.0 mg per mL	1.2 mg per mL
Functional Activity by Immunofluorescence Assay² <i>Leishmania donovani</i> (<i>L. donovani</i>)-infected human skin fibroblast cells with NR-50153 <i>L. donovani</i> -infected human skin fibroblast cells with fluorescein isothiocyanate (FITC)-conjugated goat anti-mouse IgG	Reactive Nonreactive	Reactive; staining of <i>Leishmania</i> promastigotes (Figure 2) Nonreactive; no specific staining of <i>Leishmania</i> promastigotes
Sterility	0.22 µm filter-sterilized	0.22 µm filter-sterilized

¹Mouse monoclonal antibody was purified using protein G affinity chromatography from supernatants obtained from mouse hybridoma clone D2 adapted to serum-free media.

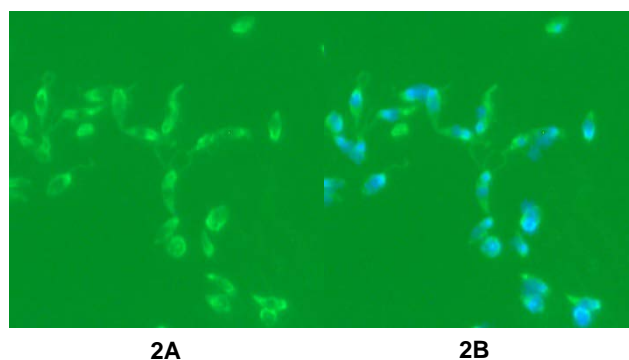
²Specific labeling of *L. donovani* promastigotes with NR-50153 and FITC was observed after culturing of *L. donovani*, strain 9515 (MHOM/IN/95/9515) (BEI Resources NR-48822 lot 64475072) for 2 days (Figure 2A). NR-50153 was used at a dilution of 1:500, followed by FITC-conjugated goat anti-mouse IgG (Invitrogen® A16073) as secondary antibody (1:2000). The overlaid 4',6-diamidino-2-phenylindole (DAPI)-stained image is shown in Figure 2B.

Figure 1: Agilent® Protein 230 Analysis



Lane 1: Protein 230 Ladder
Lane 2: NR-50153

Figure 2: Immunofluorescence Assay of *Leishmania* Promastigotes



2A

2B

/Heather Couch/
Heather Couch

31 OCT 2018

Program Manager or designee, ATCC Federal Solutions

ATCC®, on behalf of BEI Resources, hereby represents and warrants that the material provided under this certificate has been subjected to the tests and procedures specified and that the results described, along with any other data provided in this certificate, are true and accurate to the best of ATCC®'s knowledge.

ATCC® is a trademark of the American Type Culture Collection.

You are authorized to use this product for research use only. It is not intended for human use.

