

Genomic DNA from *Candida albicans*, Strain P75010

Catalog No. NR-50387

Product Description: Genomic DNA was extracted from a preparation of *Candida albicans* (*C. albicans*), strain P75010. *C. albicans*, strain P75010 is bloodstream isolate from a person with a bloodstream infection collected in Belgium in 2000.

Lot^{1,2}: 70004172

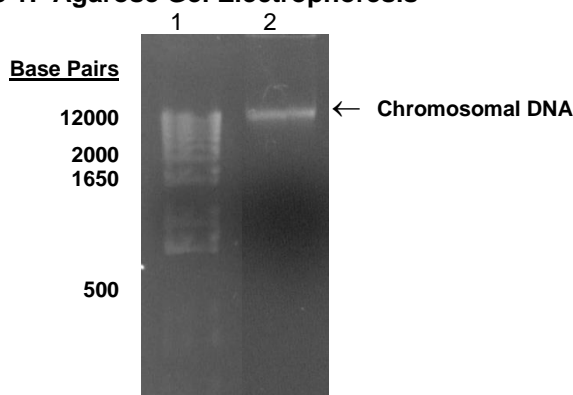
Manufacturing Date: 06APR2017

TEST	SPECIFICATIONS	RESULTS
Genotypic Analysis Partial 18S ribosomal RNA (rRNA) gene, internal transcribed spacer (ITS) 1, 5.8S rRNA gene, ITS 2, partial 28S rRNA (1130 base pairs)	≥ 99% sequence identity to <i>C. albicans</i> , strain P75010 (GenBank: JSXR01000050.1)	100% sequence identity to <i>C. albicans</i> , strain P75010 (GenBank: JSXR01000050.1)
Agarose Gel Electrophoresis	High molecular weight chromosomal DNA	High molecular weight chromosomal DNA (Figure 1)
Concentration by PicoGreen® Measurement	≥ 5 µg per vial	7.9 µg in 100 µL per vial
Functional Activity by PCR Amplification Ribosomal RNA and ITS region	~ 1200 base pair amplicon	~ 1200 base pair amplicon
OD₂₆₀/OD₂₈₀ Ratio	1.7 to 2.1	1.9

¹The fungal preparation used for extraction of genomic DNA was produced from a culture of NRS-29437 lot 60842880. Genomic DNA was extracted using proprietary technology.

²NR-50387 lot 70004172 was vialled in Tris-HCl EDTA buffer (10 mM Tris-HCl, 1 mM EDTA, pH ~ 8.0).

Figure 1: Agarose Gel Electrophoresis



Lane 1: Invitrogen™ TrackIt 1 Kb Plus DNA Ladder™
Lane 2: ~ 200 ng of NR-50387

/Heather Couch/
Heather Couch

06 DEC 2018

Program Manager or designee, ATCC Federal Solutions

ATCC®, on behalf of BEI Resources, hereby represents and warrants that the material provided under this certificate has been subjected to the tests and procedures specified and that the results described, along with any other data provided in this certificate, are true and accurate to the best of ATCC®'s knowledge.

ATCC® is a trademark of the American Type Culture Collection.
You are authorized to use this product for research use only. It is not intended for human use.



BEI Resources
www.beiresources.org

E-mail: contact@beiresources.org
Tel: 800-359-7370
Fax: 703-365-2898