

Genomic DNA from *Leishmania donovani*, Strain 9515 (MHOM/IN/95/9515)

Catalog No. NR-50466

Product Description: Genomic DNA was extracted from *Leishmania donovani* (*L. donovani*), strain 9515 (MHOM/IN/95/9515), which was isolated in 1995 from the splenic aspirate of a patient with visceral leishmaniasis in India.

Lot¹: 64541072

Manufacturing Date: 01SEP2016

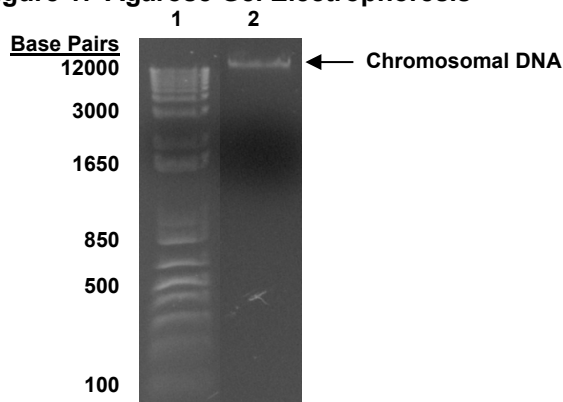
TEST	SPECIFICATIONS	RESULTS
Agarose Gel Electrophoresis	High molecular weight chromosomal DNA	High molecular weight chromosomal DNA (Figure 1)
Content by PicoGreen[®] Measurement	0.2 to 3.5 µg in 20 to 200 µL per vial	3.5 µg in 25 µL per vial (140 µg/mL)
Amount per Vial	0.2 to 3.5 µg	3.5 µg
Genotypic Analysis Sequencing of Internal transcribed spacer (ITS) 1, 5.8S ribosomal RNA gene (rRNA), ITS 2 (~ 340 base pairs)	Consistent with <i>L. donovani</i>	Consistent with <i>L. donovani</i>
Functional Activity by PCR Amplification² ITS 1, 5.8S rRNA gene, ITS 2	~ 1200 base pair amplicon	~ 1200 base pair amplicon
OD₂₆₀/OD₂₈₀ Ratio	1.7 to 2.1	1.9
Protozoan Inactivation 10% of total yield inoculated in medium ³	No viable organisms detected	No viable organisms detected

¹NR-50466 was extracted from a culture of BEI Resources NR-48822 lot 62990853 using proprietary technology. NR-50466 lot 64541072 is provided in 10 mM Tris-HCl, 1 mM EDTA, pH 7.5.

²Primer sequences and conditions for PCR are available upon request.

³Incubated for 14 days at 25°C in an aerobic atmosphere in Modified M199 medium (Lonza 12-109F) supplemented with 10% heat-inactivated fetal bovine serum and 10 µg/mL hemin.

Figure 1: Agarose Gel Electrophoresis



Lane 1: Invitrogen™ TrackIt 1 Kb Plus DNA Ladder™
Lane 2: ~ 200 ng of NR-50466

/Heather Couch/

Heather Couch

14 NOV 2018

Program Manager or designee, ATCC Federal Solutions

ATCC®, on behalf of BEI Resources, hereby represents and warrants that the material provided under this certificate has been subjected to the tests and procedures specified and that the results described, along with any other data provided in this certificate, are true and accurate to the best of ATCC®'s knowledge.

ATCC® is a trademark of the American Type Culture Collection.

You are authorized to use this product for research use only. It is not intended for human use.

