

Genomic DNA from *Staphylococcus lugdunensis*, Strain VCU139

Catalog No. NR-51363

Product Description: Genomic DNA was extracted from a preparation of *Staphylococcus lugdunensis* (*S. lugdunensis*), strain VCU139.

Lot¹: 70018060

Manufacturing Date: 05OCT2018

TEST	SPECIFICATIONS	RESULTS
Genotypic Analysis Sequencing of 16S ribosomal RNA gene (~ 1420 base pairs)	≥ 99% sequence identity to <i>S. lugdunensis</i> , strain VCU139 (GenBank: AHLK01000020.1)	99.9% sequence identity to <i>S. lugdunensis</i> , strain VCU139 (GenBank: AHLK01000020.1) ²
Agarose Gel Electrophoresis	High molecular weight chromosomal DNA	High molecular weight chromosomal DNA (Figure 1)
Concentration by PicoGreen® Measurement	0.7 to 1.5 µg in 25 to 100 µL per vial	1.2 µg in 32 µL per vial (38 µg/mL)
Amount per vial	0.7 to 1.5 µg	1.2 µg
Functional Activity by PCR Amplification 16S ribosomal RNA gene	~ 1500 base pair amplicon	~ 1500 base pair amplicon
OD₂₆₀/OD₂₈₀ Ratio	1.7 to 2.1	1.9
Bacterial Inactivation 10% of total yield plated on agar ^{3,4}	No viable bacteria detected	No viable bacteria detected

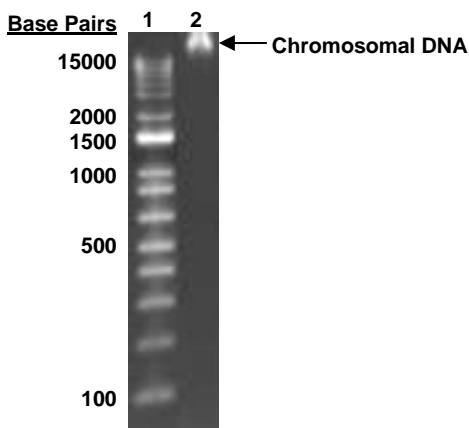
¹The bacterial preparation used for extraction of genomic DNA was produced by culture of BEI Resources NR-46406 lot 64016405. Genomic DNA was extracted using proprietary technology.

²Also consistent with other *Staphylococcus* species

³14 days at 37°C in an aerobic atmosphere on Tryptic Soy agar with 5% defibrinated sheep blood

⁴An extraction procedure was used that has been shown to consistently inactivate 100% of Gram-positive and Gram-negative bacteria.

Figure 1: Agarose Gel Electrophoresis



Lane 1: Invitrogen™ TrackIt™ 1 Kb Plus DNA Ladder
Lane 2: 200 ng of NR-51363

/Heather Couch/

Heather Couch

28 MAR 2019

Program Manager or designee, ATCC Federal Solutions

ATCC[®], on behalf of BEI Resources, hereby represents and warrants that the material provided under this certificate has been subjected by ATCC[®] to the tests and procedures specified and that the results described, along with any other data provided in this certificate, are true and accurate to the best of ATCC[®]'s knowledge.

ATCC[®] is a trademark of the American Type Culture Collection.

You are authorized to use this product for research use only. It is not intended for human use.

