

**Genomic DNA from *Staphylococcus aureus*, Strain LGA251**

**Catalog No. NR-51366**

**Product Description:** Genomic DNA was extracted from a preparation of *Staphylococcus aureus* (*S. aureus*), strain LGA251.

**Lot<sup>1</sup>: 70018063**

**Manufacturing Date: 08NOV2018**

TEST	SPECIFICATIONS	RESULTS
<b>Genotypic Analysis</b> Sequencing of 16S ribosomal RNA gene (~ 1410 base pairs)	≥ 99% sequence identity to <i>S. aureus</i> strain LGA251 (GenBank: FR821779.1)	100% sequence identity to <i>S. aureus</i> strain LGA251 (GenBank: FR821779.1) <sup>2</sup>
<b>Agarose Gel Electrophoresis</b>	High molecular weight chromosomal DNA	High molecular weight chromosomal DNA (Figure 1)
<b>Concentration by PicoGreen<sup>®</sup> Measurement</b>	0.7 to 1.5 µg in 25 to 100 µL per vial	2.1 µg in 66 µL per vial (31 µg/mL)
<b>Amount per vial</b>	0.7 to 1.5 µg	2.1 µg <sup>3</sup>
<b>Functional Activity by PCR Amplification</b> 16S ribosomal RNA gene	~ 1500 base pair amplicon	~ 1500 base pair amplicon
<b>OD<sub>260</sub>/OD<sub>280</sub> Ratio</b>	1.7 to 2.1	1.9
<b>Bacterial Inactivation</b> 10% of total yield plated on agar <sup>4,5</sup>	No viable bacteria detected	No viable bacteria detected

<sup>1</sup>The bacterial preparation used for extraction of genomic DNA was produced by culture of BEI Resources NR-49455 lot 63950725. Genomic DNA was extracted using proprietary technology.

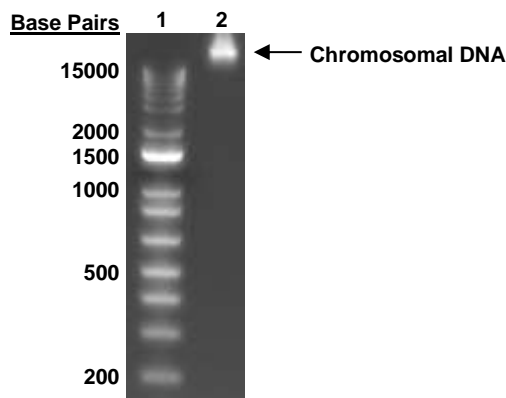
<sup>2</sup>Also consistent with other *Staphylococcus* species

<sup>3</sup>The amount of genomic DNA per vial is above the current specification, but does not negatively impact the final product.

<sup>4</sup>14 days at 37°C in an aerobic atmosphere on Tryptic Soy agar with 5% defibrinated sheep blood

<sup>5</sup>An extraction procedure was used that has been shown to consistently inactivate 100% of Gram-positive and Gram-negative bacteria.

**Figure 1: Agarose Gel Electrophoresis**



Lane 1: Invitrogen™ TrackIt™ 1 Kb Plus DNA Ladder  
Lane 2: ~ 200 ng of NR-51366

/Heather Couch/

Heather Couch

19 MAR 2019

Program Manager or designee, ATCC Federal Solutions

ATCC®, on behalf of BEI Resources, hereby represents and warrants that the material provided under this certificate has been subjected by ATCC® to the tests and procedures specified and that the results described, along with any other data provided in this certificate, are true and accurate to the best of ATCC®'s knowledge.

ATCC® is a trademark of the American Type Culture Collection.

You are authorized to use this product for research use only. It is not intended for human use.

