

Genomic DNA from *Staphylococcus epidermidis*, Strain VCU013

Catalog No. NR-51361

Product Description: Genomic DNA was extracted from a preparation of *Staphylococcus epidermidis* (*S. epidermidis*), strain VCU013.

Lot¹: 70018058

Manufacturing Date: 19OCT2018

TEST	SPECIFICATIONS	RESULTS
Genotypic Analysis Sequencing of 16S ribosomal RNA gene (~ 1320 base pairs)	≥ 99% sequence identity to <i>S. epidermidis</i> , strain VCU013 (GenBank: JHTZ01000030.1)	100% sequence identity to <i>S. epidermidis</i> , strain VCU013 (GenBank: JHTZ01000030.1) ²
Agarose Gel Electrophoresis	High molecular weight chromosomal DNA	High molecular weight chromosomal DNA (Figure 1)
Concentration by PicoGreen[®] Measurement	0.7 to 1.5 µg in 25 to 100 µL per vial	1.2 µg in 75 µL per vial (16 µg/mL)
Amount per vial	0.7 to 1.5 µg	1.2 µg
Functional Activity by PCR Amplification 16S ribosomal RNA gene	~ 1500 base pair amplicon	~ 1500 base pair amplicon
OD₂₆₀/OD₂₈₀ Ratio	1.7 to 2.1	1.8
Bacterial Inactivation 10% of total yield plated on agar ^{3,4}	No viable bacteria detected	No viable bacteria detected

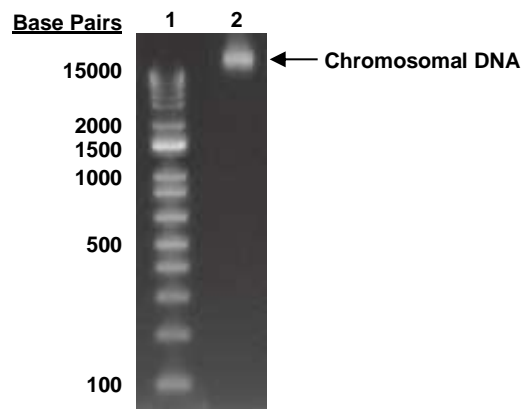
¹The bacterial preparation used for extraction of genomic DNA was produced by culture of BEI Resources NR-46376 lot 63822408. Genomic DNA was extracted using proprietary technology.

²Also consistent with other *Staphylococcus* species

³14 days at 37°C in an aerobic atmosphere on Tryptic Soy agar

⁴An extraction procedure was used that has been shown to consistently inactivate 100% of Gram-positive and Gram-negative bacteria.

Figure 1: Agarose Gel Electrophoresis



Lane 1: Invitrogen™ TrackIt™ 1 Kb Plus DNA Ladder
Lane 2: ~ 200 ng of NR-51361

/Heather Couch/

Heather Couch

13 MAR 2019

Program Manager or designee, ATCC Federal Solutions

ATCC[®], on behalf of BEI Resources, hereby represents and warrants that the material provided under this certificate has been subjected by ATCC[®] to the tests and procedures specified and that the results described, along with any other data provided in this certificate, are true and accurate to the best of ATCC[®]'s knowledge.

ATCC[®] is a trademark of the American Type Culture Collection.

You are authorized to use this product for research use only. It is not intended for human use.

