

Genomic DNA from *Encephalitozoon intestinalis*, Alveolar Isolate

Catalog No. NR-34575

Product Description: Genomic DNA was extracted from a preparation of *Encephalitozoon intestinalis* (*E. intestinalis*), alveolar isolate, which was isolated in 1994 from an AIDS patient in New York, USA.

Lot^{1,2}: 70004536

Manufacturing Date: 31JUL2018

TEST	SPECIFICATIONS	RESULTS
Agarose Gel Electrophoresis	High molecular weight chromosomal DNA	High molecular weight chromosomal DNA (Figure 1)
Concentration by PicoGreen[®] Measurement	0.2 to 3.5 µg per vial	0.37 µg in 23 µL per vial (16 µg/mL)
Amount per Vial	0.2 to 3.5 µg	0.37 µg
Genotypic Analysis Sequencing of 18S ribosomal RNA (rRNA) gene (~ 1120 base pairs)	Consistent with <i>E. intestinalis</i>	Consistent with <i>E. intestinalis</i>
Functional Activity by PCR Amplification³ 18S rRNA gene	~ 1200 base pair amplicon	~ 1200 base pair amplicon
OD₂₆₀/OD₂₈₀ Ratio	1.7 to 2.1	1.9
Protozoan Inactivation 10% of total yield inoculated in medium ⁴	No viable organisms detected	No viable organisms detected

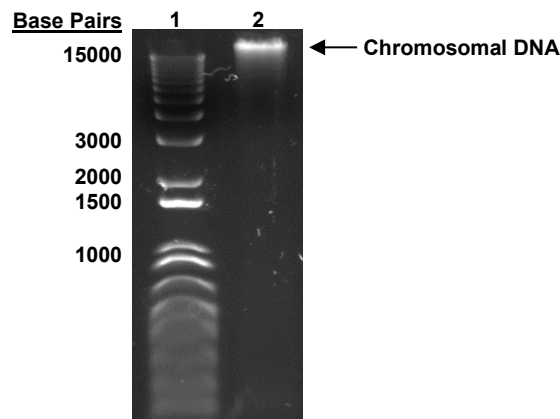
¹NR-34575 was extracted from a culture of BEI Resources NR-9702 lot 70005758. Genomic DNA was extracted using proprietary technology.

²NR-34575 lot 70004536 is provided in 10 mM Tris-HCl, 0.5 mM EDTA, pH 9.0.

³Primer sequences and conditions for PCR are available upon request.

⁴Incubated for 14 days at 37°C in an aerobic atmosphere with 5% CO₂ in EMEM medium (ATCC 30-2003) supplemented with 10% heat-inactivated fetal bovine serum

Figure 1: Agarose Gel Electrophoresis



Lane 1: Invitrogen™ TrackIt™ 1 Kb Plus DNA Ladder
Lane 2: ~ 200 ng of NR-34575

/Heather Couch/

Heather Couch

25 JUL 2019

Program Manager or designee, ATCC Federal Solutions

ATCC®, on behalf of BEI Resources, hereby represents and warrants that the material provided under this certificate has been subjected to the tests and procedures specified and that the results described, along with any other data provided in this certificate, are true and accurate to the best of ATCC®'s knowledge.

ATCC® is a trademark of the American Type Culture Collection.

You are authorized to use this product for research use only. It is not intended for human use.

