

**Salmonella enterica subsp. enterica, Strain BL0083 (Serovar Typhi)**

**Catalog No. NR-51633**

**Product Description:**

*Salmonella enterica* (*S. enterica*) subsp. *enterica*, strain BL0083 (serovar Typhi) was isolated in 2017 from human blood in Hyderabad, Sindh Province, Pakistan. Strain BL0083 (serovar Typhi) is an H58-lineage isolate deposited as resistant to carbapenem, cefixime, chloramphenicol and sulfamethoxazole/trimethoprim, and susceptible to azithromycin, cefotaxime, ertapenem, imipenem and meropenem, with intermediate susceptibility to ciprofloxacin.

**Lot: 70026685<sup>1</sup>**

**Manufacturing Date: 26JUN2019**

TEST	SPECIFICATIONS	RESULTS
<b>Phenotypic Analysis</b> Cellular morphology Colony morphology <sup>2</sup>  Motility Biochemical tests: Production of hydrogen sulfide Production of indole VITEK <sup>®</sup> 2 Compact (GN Card)	Gram-negative rods Report results  Report results  Positive Negative <i>Salmonella</i> serovar Typhi (≥ 95%)	Gram-negative rods Circular, low convex, entire, smooth and gray (Figure 1) Motile <sup>3</sup>  Positive <sup>3</sup> Negative <sup>3</sup> <i>Salmonella</i> serovar Typhi (99%) <sup>4</sup>
<b>Antibiotic Susceptibility Profile<sup>5</sup></b> VITEK <sup>®</sup> (AST-GN69 Card) Ampicillin Amoxicillin/Clavulanic Acid Ampicillin/Sulbactam Cefazolin Ceftazidime Ceftriaxone Cefepime Ciprofloxacin Ertapenem Gentamicin Imipenem Levofloxacin Nitrofurantoin Piperacillin/Tazobactam Trimethoprim/Sulfamethoxazole Tobramycin Etest <sup>®</sup> antibiotic test strips <sup>7</sup> Azithromycin Cefixime Chloramphenicol	Report results Report results Report results Report results Report results Report results Report results Intermediate Sensitive Report results Sensitive Report results Report results Report results Report results Resistant Report results  Sensitive Resistant Resistant	Resistant (≥ 32 µg/mL) Intermediate (16 µg/mL) Resistant (≥ 32 µg/mL) Resistant (≥ 64 µg/mL) Resistant (≥ 64 µg/mL) Resistant (≥ 64 µg/mL) Resistant (≥ 64 µg/mL) Resistant (≥ 64 µg/mL) Resistant (≥ 4 µg/mL) <sup>6</sup> Sensitive (≤ 0.5 µg/mL) Sensitive (≤ 1 µg/mL) Sensitive (≤ 0.25 µg/mL) Resistant (4 µg/mL) Intermediate (64 µg/mL) Intermediate (32 µg/mL) Resistant (≥ 320 µg/mL) Sensitive (≤ 1 µg/mL)  Sensitive (3 µg/mL) Resistant (> 256 µg/mL) Resistant (> 256 µg/mL)
<b>Genotypic Analysis</b> Sequencing of 16S ribosomal RNA gene (~ 1470 base pairs)	≥ 99% sequence identity to <i>S. enterica</i> subsp. <i>enterica</i> (serovar Typhi) type strain (GenBank: AE014613.1)	99.9% sequence identity to <i>S. enterica</i> subsp. <i>enterica</i> (serovar Typhi) type strain (GenBank: AE014613.1)
<b>Serogroup Verification</b>	Serogroup D (factor 9)	Serogroup D (factor 9) <sup>8</sup>
<b>Purity (post-freeze)<sup>9</sup></b>	Growth consistent with expected colony morphology	Growth consistent with expected colony morphology
<b>Viability (post-freeze)<sup>3</sup></b>	Growth	Growth

<sup>1</sup>NR-51633 was produced by inoculation of the deposited material into Nutrient broth and grown for 1 day at 37°C in an aerobic atmosphere. Broth inoculum was added to Tryptic Soy agar with 5% defibrinated sheep blood kolles, which were grown for 1 day at 37°C in an aerobic atmosphere to produce this lot.

<sup>2</sup>1 day at 37°C in an aerobic atmosphere on Tryptic Soy agar with 5% defibrinated sheep blood

<sup>3</sup>Test performed in Hardy Diagnostics™ SIM (Sulfide, Indole, Motility) Medium after 1 day at 37°C in an aerobic atmosphere.

<sup>4</sup>Percent probabilities above 90% indicate a close match to the typical biochemical pattern for the given organism. For additional information, please refer to O'Hara, C. M. and J. M. Miller. "Evaluation of the VITEK 2 ID-GNB Assay for Identification of Members of the Family *Enterobacteriaceae* and Other Nonenteric Gram-Negative Bacilli and Comparison with the VITEK GNI+ Card." *J. Clin. Microbiol.* 41 (2003): 2096-2101. PubMed: 12734254.

<sup>5</sup>Minimum Inhibitory Concentration (MIC); MIC Interpretation Guideline: CLSI M100-S28 (2018)

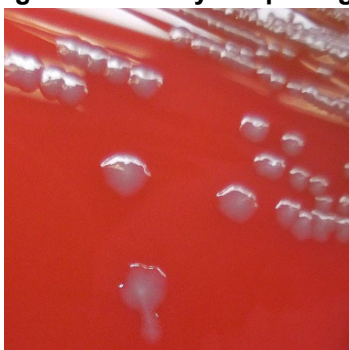
<sup>6</sup>Two MICs were observed for ciprofloxacin (2 µg/mL and ≥ 4 µg/mL) under identical test conditions. The highest MIC is being reported as the test result.

<sup>7</sup>1 day at 37°C in an aerobic atmosphere on Mueller Hinton agar

<sup>8</sup>Serogroup D contains serovar Typhi in addition to other serovars.

<sup>9</sup>Purity of this lot was assessed for 7 days at 37°C in an aerobic atmosphere with and without 5% CO<sub>2</sub> on Tryptic Soy agar with 5% defibrinated sheep blood.

Figure 1: Colony Morphology



/Heather Couch/  
Heather Couch

26 SEP 2019

Program Manager or designee, ATCC Federal Solutions

ATCC®, on behalf of BEI Resources, hereby represents and warrants that the material provided under this certificate has been subjected to the tests and procedures specified and that the results described, along with any other data provided in this certificate, are true and accurate to the best of ATCC®'s knowledge.

ATCC® is a trademark of the American Type Culture Collection.

You are authorized to use this product for research use only. It is not intended for human use.

