

Pseudomonas aeruginosa, Strain MRSN 11538

Catalog No. NR-51569

This reagent is the tangible property of the U.S. Government.

Product Description:

Pseudomonas aeruginosa (*P. aeruginosa*), strain MRSN 11538 was isolated in 2012 from a human wound as part of a surveillance program in the United States. *P. aeruginosa*, strain MRSN 11538 was deposited as sensitive to amikacin, aztreonam, ciprofloxacin, cefepime, gentamicin, levofloxacin, piperacillin/tazobactam and tobramycin, intermediately resistant to ceftazidime and resistant to imipenem and meropenem.

Lot: 70025029¹

Manufacturing Date: 05JUN2019

TEST	SPECIFICATIONS	RESULTS
Phenotypic Analysis Cellular morphology Colony morphology ² Motility (wet mount) VITEK® 2 (GN card)	Gram-negative rods Report results Report results <i>P. aeruginosa</i> (≥ 89%)	Gram-negative rods Circular, low convex, undulate, opaque and green (Figure 1) Motile <i>P. aeruginosa</i> (98%)
Antibiotic Susceptibility Profile³ VITEK® (AST-GN81 Card) Ampicillin Amoxicillin/clavulanic acid Piperacillin/tazobactam Cefazolin Cefoxitin Ceftazidime Ceftriaxone Cefepime Meropenem Amikacin Gentamicin Tobramycin Ciprofloxacin Levofloxacin Tetracycline Nitrofurantoin Trimethoprim/sulfamethoxazole	Report results Report results Sensitive Report results Report results Intermediate Report results Sensitive Resistant Sensitive Sensitive Sensitive Sensitive Sensitive Report results Report results Report results	Resistant (≥ 32 µg/mL) Resistant (≥ 32 µg/mL) Intermediate (64 µg/mL) ⁴ Resistant (≥ 64 µg/mL) Resistant (≥ 64 µg/mL) Intermediate (16 µg/mL) Resistant (≥ 64 µg/mL) Intermediate (16 µg/mL) ⁵ Resistant (≥ 16 µg/mL) Sensitive (≤ 2 µg/mL) Sensitive (≤ 1 µg/mL) Sensitive (≤ 1 µg/mL) Sensitive (1 µg/mL) Intermediate (4 µg/mL) ⁶ Resistant (≥ 16 µg/mL) Resistant (≥ 512 µg/mL) ≥ 320 µg/mL ⁷
Genotypic Analysis Sequencing of 16S ribosomal RNA gene (~ 1470 base pairs)	≥ 99% sequence identity to <i>P. aeruginosa</i> , strain MRSN 11538 (GenBank: RXWN01000143.1)	99.9% sequence identity to <i>P. aeruginosa</i> , strain MRSN 11538 (GenBank: RXWN01000143.1)
Purity (post-freeze)⁸	Growth consistent with expected colony morphology	Growth consistent with expected colony morphology
Viability (post-freeze)²	Growth	Growth

¹NR-51569 was produced by inoculation of the depositor material into Tryptic Soy broth and grown for 1 day at 37°C in an aerobic atmosphere. Broth inoculum was added to Tryptic Soy agar kolles, which were grown for 1 day at 37°C in an aerobic atmosphere to produce this lot.

²1 day at 37°C in an aerobic atmosphere on Tryptic Soy agar

³Minimum Inhibitory Concentration (MIC); MIC Interpretation Guideline: CLSI M100-S28 (2018)

⁴*P. aeruginosa*, strain MRSN 11538 was deposited as sensitive to piperacillin/tazobactam. Repeated antibiotic susceptibility testing determined that strain MRSN 11538 is intermediately resistant to piperacillin/tazobactam.

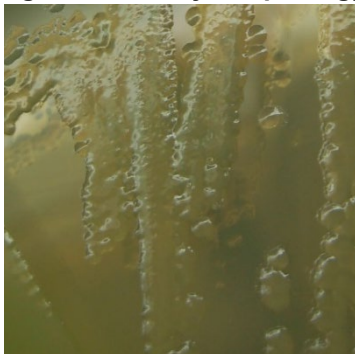
⁵*P. aeruginosa*, strain MRSN 11538 was deposited as sensitive to cefepime. Repeated antibiotic susceptibility testing determined that strain MRSN 11538 is intermediately resistant to cefepime.

⁶*P. aeruginosa*, strain MRSN 11538 was deposited as sensitive to levofloxacin. Repeated antibiotic susceptibility testing determined that strain MRSN 11538 is intermediately resistant to levofloxacin.

⁷Trimethoprim/sulfamethoxazole MIC interpretive standards are not available for *P. aeruginosa*, however most clinical isolates are resistant to trimethoprim/sulfamethoxazole. For more information, please refer to Köhler, T., et al. "Multidrug Efflux in Intrinsic Resistance to Trimethoprim and Sulfamethoxazole in *Pseudomonas aeruginosa*." *Antimicrob. Agents Chemother.* 40 (1996): 2288-2290. PubMed: 9036831.

⁸Purity of this lot was assessed for 7 days at 37°C in an aerobic atmosphere with and without 5% CO₂ on Tryptic Soy agar.

Figure 1: Colony Morphology



/Heather Couch/

Heather Couch

09 DEC 2019

Program Manager or designee, ATCC Federal Solutions

ATCC®, on behalf of BEI Resources, hereby represents and warrants that the material provided under this certificate has been subjected to the tests and procedures specified and that the results described, along with any other data provided in this certificate, are true and accurate to the best of ATCC®'s knowledge.

ATCC® is a trademark of the American Type Culture Collection.

You are authorized to use this product for research use only. It is not intended for human use.

