

Genomic RNA from Enterovirus 71 (EV-71), Tainan/4643/1998

Catalog No. NR-4960

Product Description:

Genomic RNA was isolated from a preparation of cell lysate and supernatant from human rhabdomyosarcoma (RD) cells infected with enterovirus 71 (EV-71), Tainan/4643/1998.¹

Lot: 58066137²

Manufacturing Date: 13MAY2008

TEST	SPECIFICATIONS	RESULTS
Sequencing of EV-71 Specific Region Polyprotein gene (~ 1140 nucleotides)	Consistent with EV-71, Tainan/4643/1998	Consistent with EV-71, Tainan/4643/1998
Functional Activity by RT-PCR Amplification^{3,4}	~ 1200 base pair amplicon	~ 1200 base pair amplicon (Figure 1)
Total RNA Content by RiboGreen[®] Measurement (Viral, Cellular and Carrier)	Report results	117 ng per 100 µL
Total DNA Content by PicoGreen[®] Measurement (Viral and Cellular)	Report results	25 ng per 100 µL
Virus Inactivation 10% of total yield inoculated on RD cells and evaluated for cytopathic effect ^{1,5}	No virus detected	No virus detected
Sodium Azide Content	Report results	≤ 0.0004%

¹RD cells: ATCC[®] CCL-136™

²Nucleic acid was extracted from a preparation of EV-71, Tainan/4643/1998 (BEI Resources NR-471 lot 7746372) using a QIAamp[®] Viral RNA Mini kit (Qiagen 52906).

³Amplified using a 25-fold dilution of NR-4960 and One-Step RT-PCR Kit (Qiagen 210212)

⁴The primers are described in the supplemental material of Li, L., et al. "Genetic Characteristics of Human Enterovirus 71 and Coxsackievirus A16 Circulating from 1999 to 2004 in Shenzhen, People's Republic of China." *J. Clin. Microbiol.* 43 (2005): 3835-3839. PubMed: 16081920.

⁵This extraction procedure has been shown to consistently inactivate 100% of enteroviruses using a number of methods designed to detect the virus in cells: 1) cytopathic effect (100% plating and 10% plating) and 2) indirect immunofluorescence of viral antigens.

/Heather Couch/
Heather Couch

16 MAR 2020

Program Manager or designee, ATCC Federal Solutions

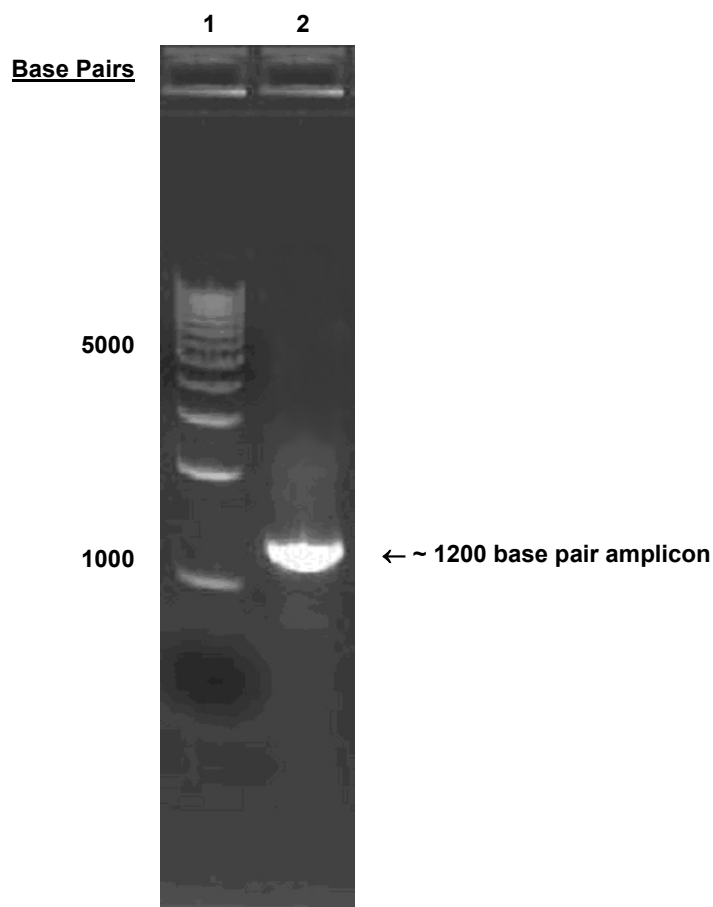
ATCC[®], on behalf of BEI Resources, hereby represents and warrants that the material provided under this certificate has been subjected to the tests and procedures specified and that the results described, along with any other data provided in this certificate, are true and accurate to the best of ATCC[®]'s knowledge.

ATCC[®] is a trademark of the American Type Culture Collection.

You are authorized to use this product for research use only. It is not intended for human use.



Figure 1: Agarose Gel Electrophoresis



Lane 1: BioRad EZ Load™ 1 kb Molecular Ruler
Lane 2: Amplification of NR-4960 using a 25-fold dilution