

**Spike Glycoprotein Receptor Binding Domain (RBD) from SARS-Related Coronavirus 2, Wuhan-Hu-1 with C-Terminal Histidine Tag, Recombinant from HEK293T Cells**

**Catalog No. NR-52946**

This reagent is the tangible property of the U.S. Government.

**Product Description:**

A recombinant form of the spike glycoprotein receptor binding domain (RBD) from severe acute respiratory syndrome-related coronavirus 2 (SARS-CoV-2), Wuhan-Hu-1 (GenPept: [QHD43416](#)) was produced in transformed human embryonic kidney HEK293T cells and purified. NR-52946 lacks the signal sequence and contains 223 residues of the SARS-CoV-2 spike glycoprotein RBD and features a C-terminal hexa-histidine tag.

**Lot: 70035805**

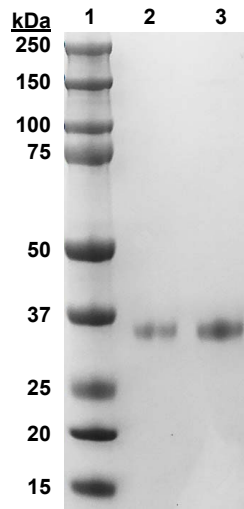
**Manufacturing Date: 24APR2020**

TEST	SPECIFICATIONS	RESULTS
Appearance	Clear and colorless	Clear and colorless
SDS-PAGE Analysis <sup>1</sup>	Protein band of interest represents > 90% of total staining intensity	Protein band of ~ 33 kDa represents > 90% of total staining intensity (Figure 1) <sup>2</sup>
Protein Concentration by Bradford Assay <sup>1</sup>	Report results	2 mg per mL
Final Product		
Amount per vial	Report results	500 µg
Volume per vial	Report results	250 µL

<sup>1</sup>Test performed on bulk material prior to deposit.

<sup>2</sup>The recombinant protein migrated to a slightly larger size than was expected, likely caused by glycosylation common in recombinant spike proteins derived from coronaviruses. For more information, please see Chakraborti, S., et al. "The SARS Coronavirus S Glycoprotein Receptor Binding Domain: Fine Mapping and Functional Characterization." *Virology* 2 (2005): 73. PubMed: 16122388.

**Figure 1: SDS-PAGE Analysis**



Lane 1: MW Marker  
 Lane 2: NR-52946 (2.5 µg)  
 Lane 3: NR-52946 (5.0 µg)

/Heather Couch/  
Heather Couch

21 MAY 2020

Program Manager or designee, ATCC Federal Solutions

ATCC<sup>®</sup>, on behalf of BEI Resources, hereby represents and warrants that the material provided under this certificate has been subjected by ATCC<sup>®</sup> or the contributor to the tests and procedures specified and that the results described, along with any other data provided in this certificate, are true and accurate to the best of ATCC<sup>®</sup>'s knowledge.

ATCC<sup>®</sup> is a trademark of the American Type Culture Collection.

You are authorized to use this product for research use only. It is not intended for human use.

