

Polyclonal Anti-SARS-Related Coronavirus 2 Spike Glycoprotein (IgG, Rabbit)

Catalog No. NR-52947

This reagent is the property of the U.S. Government.

Product Description:

Polyclonal antibodies to a recombinant form of the spike (S) glycoprotein (residues 16 to 1213 with mutations R683A and R685A; histidine-tagged; ACROBiosystems) from severe acute respiratory syndrome-related coronavirus 2 (SARS-CoV-2) were produced in rabbits, precipitated with ammonium sulfate and purified by protein G affinity chromatography.

Lot: 70035818

Manufacturing Date: 14AUG2020

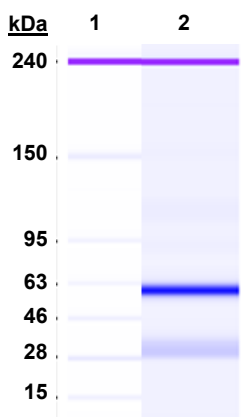
TEST	SPECIFICATIONS	RESULTS
Agilent® Protein 230 Analysis	Correct molecular weight (MW) for heavy and light chains Report purity	Correct molecular weight (MW) for heavy and light chains (Figure 1) 97.6% pure
Concentration by Spectrophotometer at OD₂₈₀	≥ 1.0 mg per mL	1.18 mg per mL
Functional Activity Western blot ¹ ELISA ²	Report results Report results	Reactive (Figure 2) Reactive (Figure 3) ³
Sterility	0.22 µm filter-sterilized	0.22 µm filter-sterilized

¹Using 0.5 µg SARS-CoV-2 S glycoprotein (ACROBiosystems Cat. No. SPN-C52H4), 1:15,000 dilution of NR-52947 and 1:10,000 dilution of anti-rabbit IRDye® conjugate

²Using 1 µg/mL SARS-CoV-2 S glycoprotein (ACROBiosystems Cat. No. SPN-C52H4), 1:250 to 1:512,000 dilution of NR-52947 and 1:10,000 dilution of anti-rabbit HRP conjugate

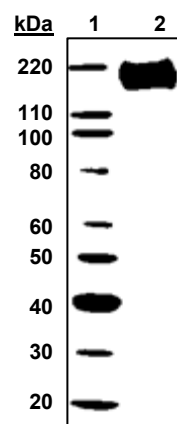
³Also reactive to human coronavirus, HKU1 S glycoprotein (BEI Resources NR-53713)

Figure 1: Agilent® Protein 230 Analysis



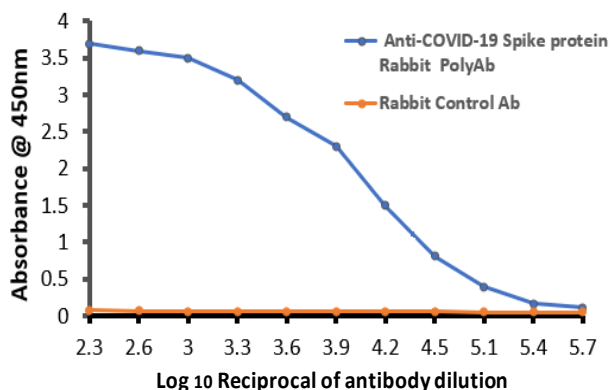
Lane 1: Agilent® Protein 230 Ladder
Lane 2: NR-52947

Figure 2: Western Blot Analysis



Lane 1: MagicMark™ XP Protein Standard
Lane 2: SARS-CoV-2 S Glycoprotein (0.5 µg)

Figure 3: Indirect ELISA



/Heather Couch/
Heather Couch

Program Manager or designee, ATCC Federal Solutions

22 SEP 2020

ATCC®, on behalf of BEI Resources, hereby represents and warrants that the material provided under this certificate has been subjected to the tests and procedures specified and that the results described, along with any other data provided in this certificate, are true and accurate to the best of ATCC®'s knowledge.

ATCC® is a trademark of the American Type Culture Collection.
You are authorized to use this product for research use only. It is not intended for human use.

