

***Kaistella daneshvariae*, Strain H3001**

Catalog No. NR-51497

This reagent is the property of the U.S. Government.

Product Description:

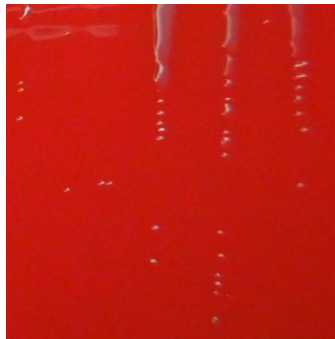
Kaistella daneshvariae (*K. daneshvariae*), strain H3001 was isolated in 2004 from peritoneal cavity of a patient in New York, USA. NR-51497 lot 70033904 was produced by inoculation of the deposited material into Heart Infusion broth with rabbit blood, which was used to inoculate Tryptic Soy broth and grown for 1 day at 35°C in an aerobic atmosphere. Broth inoculum was added to Tryptic soy agar with 5% defibrinated sheep blood kolles, which were grown for 1 day at 35°C in an aerobic atmosphere to produce this lot. Quality control testing was completed under propagation conditions unless otherwise noted.

Lot: 70033904

Manufacturing Date: 25MAR2020

TEST	SPECIFICATIONS	RESULTS
Phenotypic Analysis Cellular morphology Colony morphology Motility (wet mount) Biochemical characterization Catalase Oxidase Indole production H ₂ S production	Gram-negative rods Report results Report results Positive Positive Positive Positive	Gram-negative rods Circular, convex, entire, smooth, mucoid and gray (Figure 1) Non-motile Positive Positive Positive Positive
Genotypic Analysis Sequencing of 16S ribosomal RNA gene (~ 1450 base pairs)	≥ 99% sequence identity to <i>K. daneshvariae</i> , strain H3001 (GenBank: CP034158.1)	100% sequence identity to <i>K. daneshvariae</i> , strain H3001 (GenBank: CP034158.1)
Purity (post-freeze) 7 days at 37°C in an aerobic atmosphere with 5% CO ₂ on Tryptic soy agar	Growth consistent with expected colony morphology	Growth consistent with expected colony morphology
Viability (post-freeze)	Growth	Growth

Figure 1: Colony Morphology



/Heather Couch/

Heather Couch

09 NOV 2020

Program Manager or designee, ATCC Federal Solutions

ATCC®, on behalf of BEI Resources, hereby represents and warrants that the material provided under this certificate has been subjected to the tests and procedures specified and that the results described, along with any other data provided in this certificate, are true and accurate to the best of ATCC®'s knowledge.

ATCC® is a trademark of the American Type Culture Collection.

You are authorized to use this product for research use only. It is not intended for human use.

