



Certificate of Analysis for HRP-20070

Monoclonal Anti-Human Immunodeficiency Virus Type 1 (HIV-1) Reverse Transcriptase, Clone 28 (produced *in vitro*)

Catalog No. HRP-20070

Product Description:

Creative Biolabs Catalog No. PABW-070-LowE (Lot CB2110J12)

Antibody Class: IgG

Recombinant mouse monoclonal antibody prepared against the reverse transcriptase (RT) of human immunodeficiency virus type 1 (HIV-1) was produced from the expression vectors by transient transfection and expression in mammalian cells with chemically defined culture media, purified by affinity chromatography, ultrafiltrated and sterile filtered prior to vialing.

Lot: 70046857

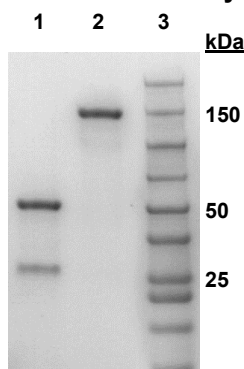
Manufacturing Date: 21NOV2021

TEST	SPECIFICATIONS	RESULTS
Antibody Class Determination	IgG	IgG2a λ
Purity SDS-PAGE analysis (Coomassie blue)	Report results	Target bands of approximately 50 kDa and 25 kDa account for > 95% of total staining intensity (Figure 1)
SEC-HPLC	Report results	Target protein band(s) > 95% (Figure 2)
Concentration	Report results	1 mg per mL
Functional Activity ELISA ¹ Western blot analysis ² Dot blot analysis ²	Reactive Reactive Reactive	Reactive (Figure 3) Reactive (Figure 4) Reactive (Figure 5)
Filtration	0.2 μ m filter-sterilized	0.2 μ m filter-sterilized
Endotoxin Content (Limulus Amoebocyte Lysate Assay)	Report results	< 1 EU per mg

¹Performed by coating with Recombinant HIV-1 RT, with HRP-Anti-Mouse IgG (H+L) as the secondary antibody

²Performed by loading Recombinant HIV-1 RT and an incubation concentration of HRP-20070 of 2 ng per μ L, with HRP-Anti-Mouse IgG (H+L) as the secondary antibody

Figure 1: SDS-PAGE Analysis



Lane 1: HRP-20070 (reduced, β -mercaptoethanol)
Lane 2: HRP-20070 (non-reduced)
Lane 3: MW ladder

NIH HIV Reagent Program

www.hivreagentprogram.org

E-mail: contact@HIVReagentProgram.org

Tel: 888-487-0727 | Fax: 703-365-2898

© 2022 American Type Culture Collection (ATCC)

All rights reserved.

HRP-20070_70046857_02MAR2022

Page 1 of 2



Figure 2: SEC-HPLC

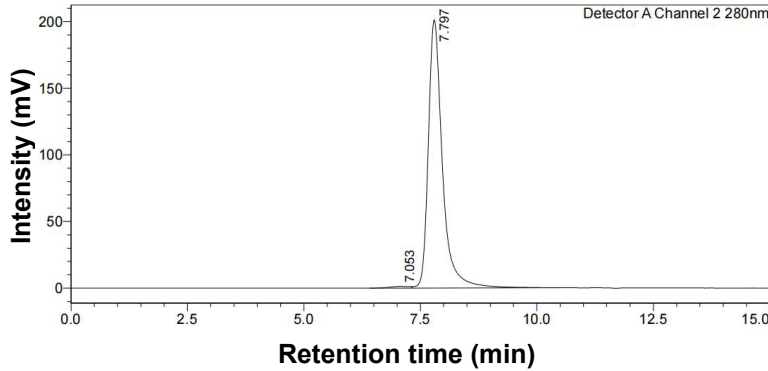


Figure 3: ELISA

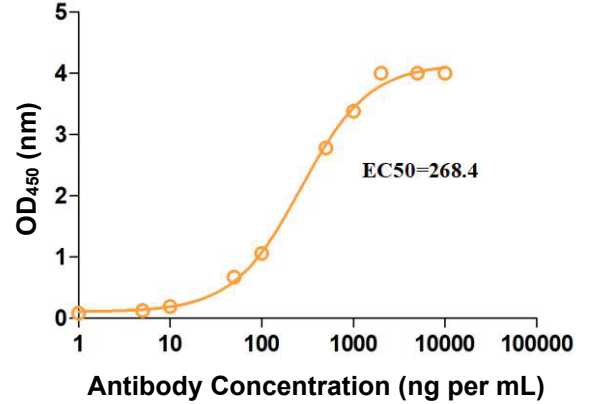
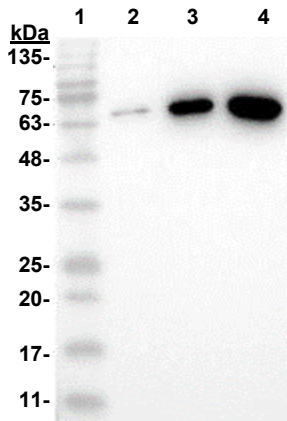
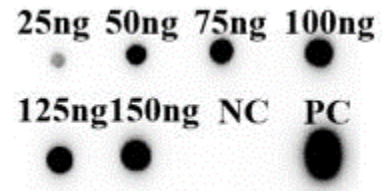


Figure 4: Western Blot Analysis



Lane 1: MW ladder
 Lane 2: HRP-20070, 0.1 µg
 Lane 3: HRP-20070, 0.3 µg
 Lane 4: HRP-20070, 0.6 µg

Figure 5: Dot Blot Analysis



/Ken Crawford/
 Ken Crawford
 Lead Technical Writer, ATCC Federal Solutions

02 MAR 2022

ATCC®, on behalf of the NIH HIV Reagent Program, hereby represents and warrants that the material provided under this certificate has been subjected by the manufacturer to the tests and procedures specified and that the results described, along with any other data provided in this certificate, are true and accurate to the best of ATCC's knowledge.

ATCC® is a trademark of the American Type Culture Collection.
 You are authorized to use this product for research use only. It is not intended for human use.

