

***Klebsiella pneumoniae*, Strain MRSN 562722**

Catalog No. NR-55572

This reagent is the tangible property of the U.S. Government.

Product Description:

Klebsiella pneumoniae (*K. pneumoniae*), strain MRSN 562722 was isolated in 2018 from a human urine sample in North America as part of a global surveillance program. NR-55572 was deposited as a susceptible strain, sensitive to amikacin, ampicillin/sulbactam, aztreonam, cefepime, ceftazidime, ceftazidime/avibactam, ceftolozane/tazobactam, ceftriaxone, ciprofloxacin, ertapenem, gentamicin, imipenem, levofloxacin, meropenem, piperacillin/tazobactam, tetracycline, tigecycline, tobramycin and trimethoprim/sulfamethoxazole. NR-55572 was produced by inoculation of the deposited material into Tryptic Soy broth and grown for 1 day at 37°C in an aerobic atmosphere. Broth inoculum was added to Tryptic Soy agar kolles, which were grown for 1 day at 37°C in an aerobic atmosphere to produce this lot. Quality control testing was completed under propagation conditions unless otherwise noted.

Lot: 70051114

Manufacturing Date: 23MAR2022

BEI Resources is committed to ensuring digital accessibility for people with disabilities. This Certificate of Analysis contains complex tables and may not be fully accessible. Please let us know if you encounter accessibility barriers and a fully accessible document will be provided: E-mail: Contact@BEIResources.org. We try to respond to feedback within 24 hours.

TEST	SPECIFICATIONS	RESULTS
Phenotypic Analysis Cellular morphology Colony morphology Motility (wet mount) VITEK® 2 (GN card)	Gram-negative rods Report results Report results <i>K. pneumoniae</i> (≥ 89%)	Gram-negative rods Circular, convex, entire, smooth, mucoid and cream (Figure 1) Non-motile <i>K. pneumoniae</i> (99%)
Antibiotic Susceptibility Profile^{1,2} Amikacin Ampicillin/sulbactam Aztreonam Cefepime Ceftazidime Ceftazidime/avibactam Ceftolozane/tazobactam Ceftriaxone Ciprofloxacin Ertapenem Gentamicin Imipenem Levofloxacin Meropenem Piperacillin/tazobactam Tetracycline Tigecycline Tobramycin Trimethoprim/sulfamethoxazole	Sensitive Sensitive	Sensitive (≤ 2 µg/mL) Sensitive (4 µg/mL) Sensitive (≤ 1 µg/mL) Sensitive (≤ 1 µg/mL) Sensitive (≤ 1 µg/mL) Sensitive (≤ 1 µg/mL) Sensitive (0.19 µg/mL) Sensitive (0.19 µg/mL) Sensitive (≤ 1 µg/mL) Sensitive (0.032 to 0.047 µg/mL) Sensitive (≤ 0.5 µg/mL) Sensitive (≤ 1 µg/mL) Sensitive (0.25 µg/mL) Sensitive (≤ 0.12 µg/mL) Sensitive (≤ 0.25 µg/mL) Sensitive (≤ 4 µg/mL) Sensitive (≤ 1 µg/mL) Sensitive (1 µg/mL) ³ Sensitive (≤ 1 µg/mL) Sensitive (≤ 20 µg/mL)
Genotypic Analysis Sequencing of 16S ribosomal RNA gene (~ 1470 base pairs)	≥ 99% sequence identity to <i>K. pneumoniae</i> , strain MRSN 562722 (GenBank: JAGYCN010000106.1)	99.6% sequence identity to <i>K. pneumoniae</i> , strain MRSN 562722 (GenBank: JAGYCN010000106.1) ⁴

TEST	SPECIFICATIONS	RESULTS
Purity 7 days at 37°C in an aerobic atmosphere and without 5% CO ₂ on Tryptic Soy agar	Growth consistent with expected colony morphology	Growth consistent with expected colony morphology
Viability	Growth	Growth

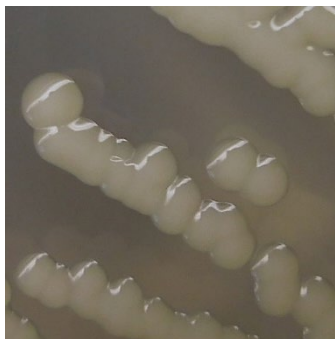
¹Minimum Inhibitory Concentration (MIC); MIC Interpretation Guideline: CLSI M100-S28 (2018)

²Antibiotic susceptibility was tested using a combination of bioMérieux VITEK[®]2 GN74 and ETEST[®].

³MIC Interpretation Guideline: EUCAST Version 8.0 (2018)

⁴Also consistent with other *Klebsiella* species

Figure 1: Colony Morphology



/Heather Couch/

Heather Couch

26 MAY 2022

Program Manager or designee, ATCC Federal Solutions

ATCC[®], on behalf of BEI Resources, hereby represents and warrants that the material provided under this certificate has been subjected to the tests and procedures specified and that the results described, along with any other data provided in this certificate, are true and accurate to the best of ATCC[®]'s knowledge.

ATCC[®] is a trademark of the American Type Culture Collection.

You are authorized to use this product for research use only. It is not intended for human use.

