



TEST	SPECIFICATIONS	RESULTS
<b>Purity</b> 8 days at 37°C in an aerobic atmosphere with and without 5% CO <sub>2</sub> on Tryptic Soy agar	Growth consistent with expected colony morphology	Growth consistent with expected colony morphology
<b>Viability</b>	Growth	Growth

<sup>1</sup>Minimum Inhibitory Concentration (MIC); MIC Interpretation Guideline: CLSI M100-S28 (2018)

<sup>2</sup>Antibiotic susceptibility was tested using a combination of bioMérieux VITEK®2 GN74 and ETEST®.

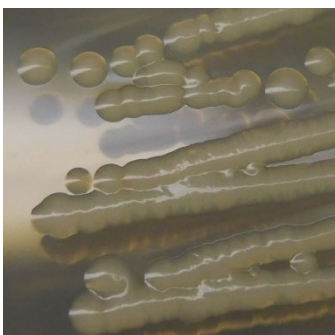
<sup>3</sup>*K. pneumoniae*, strain MRSN 19073 was deposited as resistant to cefepime, but showed a MIC of 2 µg per mL (interpreted as sensitive) for this antibiotic during QC testing. Testing was performed in duplicate.

<sup>4</sup>The susceptibility result for this antibiotic is within one doubling dilution of specification, which is considered an equivalent result.

<sup>5</sup>MIC Interpretation Guideline: EUCAST Version 8.0 (2018)

<sup>6</sup>Also consistent with other *Klebsiella* species

Figure 1: Colony Morphology



/Sonia Bjorun Brower/

Sonia Bjorun Brower

08 AUG 2022

Lead Technical Writer or designee, ATCC Federal Solutions

ATCC®, on behalf of BEI Resources, hereby represents and warrants that the material provided under this certificate has been subjected to the tests and procedures specified and that the results described, along with any other data provided in this certificate, are true and accurate to the best of ATCC®'s knowledge.

ATCC® is a trademark of the American Type Culture Collection.

You are authorized to use this product for research use only. It is not intended for human use.

