

MSQ43, *Anopheles stephensi* Cell Line

Catalog No. MRA-858

Product Description:

MSQ43 is an immortalized cell line derived from the larval tissue of the mosquito *Anopheles stephensi*, Indian wildtype strain. MRA-858 lot 70013642 was produced by cultivation of the deposited material in complete culture medium (CCM) at 28°C in sealed flasks for 4 days, after which the cells reached >90% confluency and were harvested.

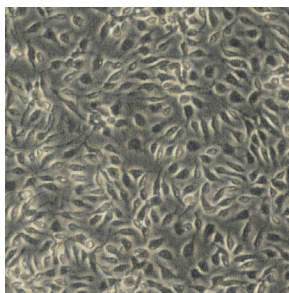
Lot: 70013642

Manufacturing Date: 17JUN2022

TEST	SPECIFICATIONS	RESULTS
Growth Properties	Adherent monolayer	Adherent monolayer (Figure 1)
Total Cell Count (post-freeze)	> 1.0 × 10 ⁶ cells per vial	5 × 10 ⁶ cells per vial
Viability (post-freeze)	≥ 75%	97.1%
Sterility (21-day incubation) Harpo's HTYE broth, 37°C and 26°C, aerobic ¹ Trypticase soy broth, 37°C and 26°C, aerobic Sabouraud broth, 37°C and 26°C, aerobic DMEM with 10% FBS, 37°C, aerobic Sheep blood agar, 37°C, aerobic Sheep blood agar, 37°C, anaerobic Thioglycollate broth, 37°C, anaerobic	No growth No growth No growth No growth No growth No growth No growth	No growth No growth No growth No growth No growth No growth No growth
Mycoplasma Contamination DNA detection by PCR	None detected	None detected

¹Atlas, Ronald M. *Handbook of Microbiological Media*. 3rd ed. Ed. Lawrence C. Parks. Boca Raton: CRC Press, 2004, p. 798.

Figure 1: Cellular Morphology



/Sonia Bjorum Brower/
Sonia Bjorum Brower

Technical Manager or designee, ATCC Federal Solutions

15 MAR 2023

ATCC®, on behalf of BEI Resources, hereby represents and warrants that the material provided under this certificate has been subjected to the tests and procedures specified and that the results described, along with any other data provided in this certificate, are true and accurate to the best of ATCC®'s knowledge.

ATCC® is a trademark of the American Type Culture Collection.

You are authorized to use this product for research use only. It is not intended for human use.

