

H1 Hemagglutinin (HA) Protein from Influenza A Virus, A/Victoria/2570/2019 (H1N1)pdm09, Recombinant from Baculovirus

Catalog No. NR-58719

This reagent is the tangible property of the U.S. Government.

Product Description:

A recombinant form of the H1 Hemagglutinin (HA) Protein from Influenza A Virus, A/Victoria/2570/2019 (H1N1)pdm09, was produced in Sf9 insect cells using a baculovirus expression vector system. The recombinant ectodomain of HA protein with GFP and a hexa-histidine tag was purified by ion exchange and affinity chromatography. This item was manufactured and subjected to quality control testing by St. Jude Children's Research Hospital (SJCRH), Memphis, Tennessee, USA.

Lot: 70056895

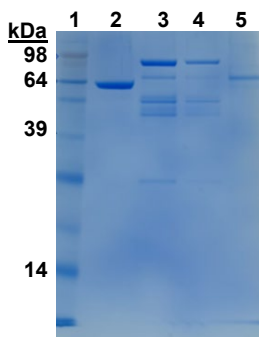
Manufacturing Date: 09JUN2022

TEST	SPECIFICATIONS	RESULTS
Appearance	Report results	Opalescent
SDS-PAGE Analysis¹	Report results	Four bands of ~95 kDa, ~75 kDa, ~65 kDa ~45 kDa and a minor band at ~25 kDa (Figure 1)
Identification by Western Blot Analysis²	Reactive	Reactive
Concentration by Bicinchoninic Acid Assay Bovine Serum Albumin (BSA; standard)	Report results	0.70 mg/mL
Final Product Amount per vial Volume per vial	Report results Report results	175 µg 0.25 mL
Functional Activity Hemagglutination activity using 0.5% turkey red blood cells	Report results	Low (1:2)
Filtration	0.2 µm sterile-filtered	0.2 µm sterile-filtered
Endotoxin	Report results	≤ 0.5 EU/mL

¹Molecular weight of NR-58719 is ~ 95kDa. The multiple bands may represent HA0, HA1, HA2 fragments.

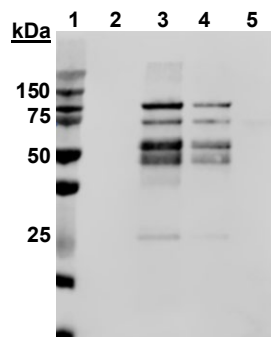
²Using a 1:2000 dilution of anti-H1 polyclonal goat antiserum G. 618 (2009) [against A/California/04/2009 (H1N1)pdm09 influenza virus] as primary antibody.

Figure 1: SDS-PAGE Analysis



Lane 1: Molecular weight markers
Lane 2: BSA (1.0 µg)
Lane 3: NR-58719, 1.0 µg (pre-vial)
Lane 4: NR-58719, 1.0 µg (post-vial)
Lane 5: HA B (influenza B/Brisbane/60/2008) (1.0 µg)

Figure 2: Western Blot Analysis



/Sonia Bjorum Brower/
Sonia Bjorum Brower

Technical Manager or designee, ATCC Federal Solutions

16 MAR 2023

ATCC®, on behalf of BEI Resources, hereby represents and warrants that the material provided under this certificate has been subjected by the contributor to the tests and procedures specified and that the results described, along with any other data provided in this certificate, are true and accurate to the best of ATCC®'s knowledge.

ATCC® is a trademark of the American Type Culture Collection.

You are authorized to use this product for research use only. It is not intended for human use.

