

# Monoclonal Anti-SARS-Related Coronavirus 2 Full-Length Spike Protein, Clone 5AD5 (produced *in vitro*)

Catalog No. NR-56786

## Product Description:

Antibody Class: IgG1κ

Mouse monoclonal antibody prepared against the full-length spike (S) glycoprotein of severe acute respiratory syndrome-related coronavirus 2 (SARS-CoV-2), Wuhan-Hu-1 was purified from hybridoma clone 5AD5 supernatant by protein G affinity chromatography. The B cell hybridoma was generated by the fusion of Sp2/0 mouse myeloma cells with splenocytes from BALB/c mice immunized with recombinant purified S protein.

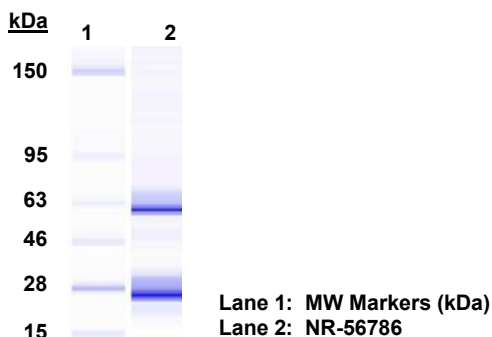
Lot: 70052615

Manufacturing Date: 07MAR2023

TEST	SPECIFICATIONS	RESULTS
Antibody Class Determination	IgG1κ	IgG1κ
Agilent® Protein 230 Analysis	Correct molecular weight (MW) for heavy and light chains; Report purity	Correct molecular weight (MW) for heavy and light chains (Figure 1); 96.8% pure
Concentration by Spectrophotometer at OD <sub>280</sub>	~ 1 mg/mL	1.1 mg/mL
Functional activity ELISA	Report results	Reactive <sup>1</sup>
Sterility	0.22 µm filter-sterilized	0.22 µm filter-sterilized

<sup>1</sup>Using a 1:5000 dilution of NR-56786 as primary antibody and a 1:10,000 dilution of HRP-conjugated anti-mouse IgG (Bethyl Lab A90-144P) as secondary antibody. ELISA was tested against full-length S protein.

Figure 1: Agilent® Protein 230 Analysis



/Sonia Bjorum Brower/

Sonia Bjorum Brower

Technical Manager or designee, ATCC Federal Solutions

21 JUN 2023

ATCC®, on behalf of BEI Resources, hereby represents and warrants that the material provided under this certificate has been subjected to the tests and procedures specified and that the results described, along with any other data provided in this certificate, are true and accurate to the best of ATCC®'s knowledge.

ATCC® is a trademark of the American Type Culture Collection.

You are authorized to use this product for research use only. It is not intended for human use.



BEI Resources

[www.beiresources.org](http://www.beiresources.org)

E-mail: [contact@beiresources.org](mailto:contact@beiresources.org)

Tel: 800-359-7370

Fax: 703-365-2898